

Enfuse

Fusing Multiple Images
with Enfuse version 4.0-753b534c819d, 22 December 2013

Andrew Mihal

This manual is for Enfuse (version 4.0-753b534c819d, 22 December 2013), a program to merge different exposures of the same scene to produce an image that looks much like a tonemapped image.

Copyright © 2004–2009 ANDREW MIHAL.

Permission is granted to copy, distribute and/or modify this document under the terms of the GNU Free Documentation License, Version 1.2 or any later version published by the Free Software Foundation; with no Invariant Sections, no Front-Cover Texts and no Back-Cover Texts. A copy of the license is included in the section entitled “GNU Free Documentation License”.

Short Contents

List of Tables	iv
List of Figures	v
1 Overview	1
2 Workflow	3
3 Invocation	5
4 Weighting Functions	21
5 Understanding Masks	31
6 Tuning Memory Usage	33
7 Applications of Enfuse	35
8 Helpful Additional Programs	46
A Bug Reports	48
B Authors	50
C GNU Free Documentation License	51
Program Index	57
Syntactic-Comment Index	58
Option Index	59
General Index	60

Table of Contents

List of Tables	iv
List of Figures	v
1 Overview	1
2 Workflow	3
3 Invocation	5
3.1 Response Files	5
3.1.1 Response File Format	6
3.1.2 Syntactic Comments	7
3.1.3 Globbing Algorithms	7
3.2 Common Options	8
3.3 Extended Options	11
3.4 Fusion Options	13
3.5 Expert Options	14
3.6 Option Delimiters	20
4 Weighting Functions	21
4.1 Weighting Pixels	21
4.1.1 Weighted Average	21
4.1.2 Disabling Averaging: Option ‘--hard-mask’	22
4.2 Exposure Weighting	22
4.3 Saturation Weighting	23
4.4 Local Contrast Weighting	24
4.4.1 Standard Deviation	24
4.4.1.1 Statistical Moments	25
4.4.1.2 Estimators	26
4.4.2 Laplacian of Gaussian	26
4.4.3 Blend Standard Deviation and Laplacian of Gaussian	28
4.4.4 Scaling and Choice of Mode	28
4.5 Local Entropy Weighting	28
5 Understanding Masks	31
5.1 Masks in Input Files	31
5.2 Weight Mask Files	32
6 Tuning Memory Usage	33

7	Applications of Enfuse	35
7.1	What Makes Images Fusable?	35
7.2	Repetition – Noise Reduction	36
7.3	Exposure Series – Dynamic Range Increase	36
7.3.1	Tips For Beginners	37
7.3.2	Common Misconceptions	37
7.4	Flash Exposure Series – Directed Lighting	38
7.5	Polarization Series – Saturation Enhancement	38
7.6	Focus Stacks – Depth-of-Field Increase	38
7.6.1	Why create focus stacks?	38
7.6.2	Preparing Focus Stacks	38
7.6.3	Local Contrast Based Fusing	39
7.6.4	Basic Focus Stacking	39
7.6.5	Advanced Focus Stacking	40
7.6.5.1	A Detailed Look at the Problem	40
7.6.5.2	Laplacian Edge Detection	42
7.6.5.3	Local Contrast Enhancement	42
7.6.5.4	Suppressing Noise or Recognizing Faint Edges	42
7.6.5.5	Focus Stacking Decision Tree	44
7.6.6	Tips For Focus Stacking Experts	45
8	Helpful Additional Programs	46
Appendix A	Bug Reports	48
A.1	Have You Really Found a Bug?	48
A.2	How to Report Bugs	48
A.3	Sending Patches for Enblend or Enfuse	49
Appendix B	Authors	50
Appendix C	GNU Free Documentation License	51
Program Index		57
Syntactic-Comment Index		58
Option Index		59
General Index		60

List of Tables

Table 1.1: Weighting criteria	1
Table 3.1: Grammar of response files	6
Table 3.2: Grammar of syntactic comments	7
Table 3.3: Globbing algorithms	8
Table 3.4: Mask template characters	19
Table 6.1: Suggested cache-size settings	33

List of Figures

Figure 2.1: Photographic workflow with Enblend and Enfuse.	3
Figure 3.1: Entropy cutoff function.	16
Figure 4.1: Gaussian function.	23
Figure 4.2: Local analysis window.	25
Figure 4.3: Laplacian-of-Gaussian.	27
Figure 4.4: Entropy function.	29
Figure 7.1: Sharp edge.	41
Figure 7.2: Smooth edge.	41
Figure 7.3: Focus stacking decision tree.	44

1 Overview

Enfuse merges overlapping images using the MERTENS-KAUTZ-VAN REETH exposure fusion algorithm.¹ This is a quick way for example to blend differently exposed images into a nice output image, without producing intermediate high-dynamic range (HDR) images that are then tonemapped to a viewable image. This simplified process often works much better than tonemapping algorithms.

Enfuse can also be used to build extended depth-of-field (DOF) images by blending a focus stack.

The idea is that pixels in the input images are weighted according to qualities such as, for example, proper exposure, good local contrast, or high saturation. These weights determine how much a given pixel will contribute to the final image.

A BURT-ADELSON multiresolution spline blender² is used to combine the images according to the weights. The multiresolution blending ensures that transitions between regions where different images contribute are difficult to spot.

Enfuse uses up to four criteria to judge the quality of a pixel, which [Table 1.1](#) briefly describes.

Exposure The exposure criteria favors pixels with luminance close to the middle of the range. These pixels are considered better exposed than those with high or low luminance levels.

Saturation The saturation criteria favors highly-saturated pixels. (Note that saturation is only defined for color pixels.)

Local Contrast

The contrast criteria favors pixels inside a high-contrast neighborhood. Enfuse can use standard deviation, Laplacian magnitude, or a blend of both as local contrast measure.

Local Entropy

The entropy criteria prefers pixels inside a high-entropy neighborhood. In addition, Enfuse allows the user to mitigate the problem of noisy images when using entropy weighting by setting a black threshold.

Table 1.1: Enfuse’s four weighting criteria.

For the concept of pixel weighting, and details on the different weighting functions, see [Chapter 4 \[Weighting Functions\]](#), page 21.

Adjust how much importance is given to each criterion by setting the weight parameters on the command line. For example, if you set ‘`--exposure-weight=1.0`’ and ‘`--saturation-weight=0.5`’, Enfuse will favor well-exposed pixels over highly-saturated pixels when blending the source images. The effect of these parameters on the final result will not always be clear in advance. The quality of the result is subject to your artistic

¹ Tom Mertens, Jan Kautz, and Frank van Reeth, “Exposure Fusion”, Proceedings of the 15th Pacific Conference on Computer Graphics and Applications, pages 382–390.

² Peter J. Burt and Edward H. Adelson, “A Multiresolution Spline With Application to Image Mosaics”, ACM Transactions on Graphics, Vol. 2, No. 4, October 1983, pages 217–236.

interpretation. Playing with the weights may or may not give a more pleasing result. The authors encourage you to experiment, perhaps using down-sized³ or cropped images for speed.

Enfuse expects but does not require each input image to have an alpha channel. By setting the alpha values of pixels to zero, users can manually remove those pixels from consideration when blending. If an input image lacks an alpha channel, Enfuse will issue a warning and continue assuming all pixels should contribute to the final output. Any alpha value other than zero is interpreted as “this pixel should contribute to the final image”.

Enfuse reads all layers of multi-layer images, like, for example, multi-directory TIFF images⁴. The input images are processed in the order they appear on the command line. Multi-layer images are processed from the first layer to the last before Enfuse considers the next image on the command line.

Find out more about Enfuse on its [SourceForge web page](#).

³ Downsampling with a good interpolator reduces noise, which might not be desired to judge the image quality of the original-size image. Cropping might be an alternative, though.

⁴ Use utilities like, e.g., `tiffcopy` and `tiffsplit` of LibTIFF to manipulate multi-directory TIFF images. See [Chapter 8 \[Helpful Programs\]](#), page 46.

2 Workflow

Enblend and Enfuse are parts of a chain of tools to assemble images.

- Enblend combines a series of pictures taken at the same location but in different directions.
- Enfuse merges photos of the same subject at the same location and same direction, but taken with varying exposure parameters.

Figure 2.1 shows where Enblend and Enfuse sit in this tool chain.



Figure 2.1: Photographic workflow with Enblend and Enfuse.

Take Images

Take *multiple* images to form a panorama, an exposure series, a focus stack, etc.

There is one exception with Enfuse when a single raw image is converted multiple times to get several – typically differently “exposed” – images.

Exemplary Benefits

- Many pictures taken from the same vantage point but showing different viewing directions. – Panorama

- Pictures of the same subject exposed with different shutter speeds. – Exposure series
- Images of the same subject focussed at differing distances. – Focus stack

Remaining Problem: The “overlayed” images may not fit together, that is the overlay regions may not match exactly.

Convert Images

Convert the **raw data** exploiting the full dynamic range of the camera and capitalize on a high-quality conversion.

Align Images

Align the images so as to make them match as well as possible.

Again there is one exception and this is when images naturally align.

For example, a series of images taken from a rock solid tripod with a cable release without touching the camera, or images taken with a shift lens, can align without further user intervention.

This step submits the images to affine transformations. If necessary, it rectifies the lens’ distortions (e.g. barrel or pincushion), too. Sometimes even luminance or color differences between pairs of overlaying images are corrected (“photometric alignment”).

Benefit: The overlay areas of images match as closely as possible given the quality of the input images and the lens model used in the transformation.

Remaining Problem: The images may still not align perfectly, for example, because of **parallax** errors, or blur produced by camera shake.

Combine Images

Enblend and Enfuse combine the aligned images into one.

Benefit: The overlay areas become imperceptible for all but the most mal-aligned images.

Remaining Problem: Enblend and Enfuse write images with an alpha channel. (For more information on alpha channels see [Chapter 5 \[Understanding Masks\]](#), [page 31](#).) Furthermore, the final image rarely is rectangular.

Postprocess

Postprocess the combined image with your favorite tool. Often the user will want to crop the image and simultaneously throw away the alpha channel.

View

Print

Enjoy

3 Invocation

`enfuse` [*OPTIONS*] [--output=*IMAGE*] *INPUT*...

Fuse the sequence of images *INPUT*... into a single *IMAGE*.

Input images are either specified literally or via so-called response files (see below). The latter are an alternative to specifying image filenames on the command line.

3.1 Response Files

A response file contains names of images or other response filenames. Introduce response file names with an at-character ('@').

Enblend and Enfuse process the list *INPUT* strictly from left to right, expanding response files in depth-first order. (Multi-layer files are processed from first layer to the last.) The following examples only show Enblend, but Enfuse works exactly the same.

Solely image filenames.

Example:

```
enblend image-1.tif image-2.tif image-3.tif
```

The ultimate order in which the images are processed is: 'image-1.tif', 'image-2.tif', 'image-3.tif'.

Single response file.

Example:

```
enblend @list
```

where file 'list' contains

```
img1.exr
img2.exr
img3.exr
img4.exr
```

Ultimate order: 'img1.exr', 'img2.exr', 'img3.exr', 'img4.exr'.

Mixed literal names and response files.

Example:

```
enblend @master.list image-09.png image-10.png
```

where file 'master.list' comprises of

```
image-01.png
@first.list
image-04.png
@second.list
image-08.png
```

'first.list' is

```
image-02.png
image-03.png
```

and 'second.list' contains

```

image-05.png
image-06.png
image-07.png
Ultimate order: 'image-01.png', 'image-02.png', 'image-03.png', 'image-
04.png', 'image-05.png', 'image-06.png', 'image-07.png', 'image-08.png',
'image-09.png', 'image-10.png',

```

3.1.1 Response File Format

Response files contain one filename per line. Blank lines or lines beginning with a sharp sign (`#`) are ignored; the latter can serve as comments. Filenames that begin with an at-character (`@`) denote other response files. [Table 3.1](#) states a formal grammar of response files in [EBNF](#).

```

response-file ::= line*
line          ::= (comment | file-spec) ['\r'] '\n'
comment       ::= space* '#' text
file-spec     ::= space* '@' filename space*
space         ::= ' ' | '\t'

```

where *text* is an arbitrary string and *filename* is any filename.

Table 3.1: EBNF definition of the grammar of response files.

In a response file relative filenames are used relative the response file itself, not relative to the current-working directory of the application.

The above grammar might unpleasantly surprise the user in the some ways.

Whitespace trimmed at both line ends

For convenience, whitespace at the beginning and at the end of each line is ignored. However, this implies that response files cannot represent filenames that start or end with whitespace, as there is no quoting syntax. Filenames with embedded whitespace cause no problems, though.

Only whole-line comments

Comments in response files always occupy a complete line. There are no “line-ending comments”. Thus, in

```

# exposure series
img-0.33ev.tif # "middle" EV
img-1.33ev.tif
img+0.67ev.tif

```

only the first line contains a comment, whereas the second line includes none. Rather, it refers to a file called `img-0.33ev.tif # "middle" EV`.

Image filenames cannot start with `@`

An at-sign invariably introduces a response file, even if the filename’s extension hints towards an image.

If `Enblend` or `Enfuse` do not recognize a response file, they will skip the file and issue a warning. To force a file being recognized as a response file add one of the following syntactic comments to the *first* line of the file.

```
response-file: true
enblend-response-file: true
enfuse-response-file: true
```

Finally, here is an example of a valid response file.

```
# 4\pi panorama!

# These pictures were taken with the panorama head.
@round-shots.list

# Freehand sky shot.
zenith.tif

# "Legs, will you go away?" images.
nadir-2.tif
nadir-5.tif
nadir.tif
```

3.1.2 Syntactic Comments

Comments that follow the format described in [Table 3.2](#) are treated as instructions how to interpret the rest of the response file. A syntactic comment is effective immediately and its effect persists to the end of the response file, unless another syntactic comment undoes it.

```
syntactic-comment ::= space* '#' space* key space* ':' space* value
key ::= ('A' .. 'Z' | 'a' .. 'z' | '-')+
```

where *value* is an arbitrary string.

Table 3.2: EBNF definition of the grammar of syntactic comments in response files.

Unknown syntactic comments are silently ignored.

3.1.3 Globbing Algorithms

The three equivalent syntactic keys

- `glob`,
- `globbing`, or
- `filename-globbing`

control the algorithm that Enblend or Enfuse use to glob filenames in response files.

All versions of Enblend and Enfuse support at least two algorithms: `literal`, which is the default, and `wildcard`. See [Table 3.3](#) for a list of all possible globbing algorithms. To find out about the algorithms in your version of Enblend or Enfuse team up the options `--version` and `--verbose`.

literal	Do not glob. Interpret all filenames in response files as literals. This is the default. Please keep in mind that whitespace at both ends of a line in a response file <i>always</i> gets discarded.
wildcard	Glob using the wildcard characters ‘?’, ‘*’, ‘[’, and ‘]’. The W*N32 implementation only globs the filename part of a path, whereas all other implementations perform wildcard expansion in <i>all</i> path components. Also see glob(7) .
none	Alias for literal .
shell	The shell globbing algorithm works as literal does. In addition, it interprets the wildcard characters ‘{’, ‘}’, and ‘~’. This makes the expansion process behave more like common UN*X shells.
sh	Alias for shell .

Table 3.3: Globbing algorithms for the use in response files

Example:

```
# Horizontal panorama
# 15 images

# filename-globbing: wildcard

image_000[0-9].tif
image_001[0-4].tif
```

3.2 Common Options

Common options control some overall features of Enfuse.

--compression=COMPRESSION

Write a compressed output file.

Depending on the output file format, Enfuse accepts different values for **COMPRESSION**.

JPEG **COMPRESSION** is a JPEG quality level ranging from 0–100.

TIFF **COMPRESSION** is one of the keywords:

‘NONE’ Do not compress. This is the default.

‘DEFLATE’ Use the DEFLATE compression scheme also called ZIP-in-TIFF. DEFLATE is a lossless data compression algorithm that uses a combination of the LZ77 algorithm and HUFFMAN coding.

‘LZW’ Use LEMPEL-ZIV-WELCH (LZW) adaptive compression scheme. LZW compression is lossless.

‘PACKBITS’

Use PACKBITS compression scheme. PACKBITS is a particular variant of run-length compression; it is lossless.

Any other format

Other formats do not accept a *COMPRESSION* setting.

However, **VIGRA** automatically compresses ‘png’-files with the DEFLATE method.

-h

--help Print information on the available options then exit.

-l LEVELS

--levels=LEVELS

Use at most this many *LEVELS* for pyramid¹ blending if *LEVELS* is positive, or reduce the maximum number of levels used by *-LEVELS* if *LEVELS* is negative.

The number of levels used in a pyramid controls the balance between local and global image features (contrast, saturation, ...) in the blended region. Fewer levels emphasize local features and suppress global ones. The more levels a pyramid has, the more global features will be taken into account.

As a guideline, remember that each new level works on a linear scale twice as large as the previous one. So, the zeroth layer, the original image, obviously defines the image at single-pixel scale, the first level works at two-pixel scale, and generally, the *n*-th level contains image data at 2^n -pixel scale. This is the reason why an image of *width*×*height* pixels cannot be deconstructed into a pyramid of more than

$$\lfloor \log_2(\min(\textit{width}, \textit{height})) \rfloor$$

levels.

If too few levels are used, “halos” around regions of strong local feature variation can show up. On the other hand, if too many levels are used, the image might contain too much global features. Usually, the latter is not a problem, but is highly desired. This is the reason, why the default is to use as many levels as is possible given the size of the overlap regions. Enfuse may still use a smaller number of levels if the geometry of the overlap region demands.

Positive values of *LEVELS* limit the maximum number of pyramid levels. Depending on the size and geometry of the overlap regions this may or may not influence any pyramid. Negative values of *LEVELS* reduce the number of pyramid levels below the maximum no matter what the actual maximum is and thus always influence all pyramids.

The valid range of the absolute value of *LEVELS* is 1 to 29.

¹ As Dr. Daniel Jackson correctly **noted**, actually, it is not a pyramid: “Ziggaurat, it’s a **Ziggaurat**.”

-o
--output=FILE
 Place output in *FILE*.
 If ‘**--output**’ is not specified, the default is to put the resulting image in ‘**a.tif**’.

-v
--verbose[=LEVEL]
 Without an argument, increase the verbosity of progress reporting. Giving more ‘**--verbose**’ options will make Enfuse more verbose. Directly set a verbosity level with a non-negative integral *LEVEL*.
 Each level includes all messages of the lower levels.

Level	Messages
0	only warnings and errors
1	reading and writing of images
2	mask generation, pyramid, and blending
3	reading of response files, color conversions
4	image sizes, bounding boxes and intersection sizes
5	detailed information on the optimizer runs (Enblend only)
6	estimations of required memory in selected processing steps

The default verbosity level of Enfuse is 1.

-V
--version
 Output information on the Enfuse version.
 Team this option with ‘**--verbose**’ to show configuration details, like the extra features that have been compiled in.

-w
--wrap=MODE
 Blend around the boundaries of the panorama.
 With this option, Enfuse treats the panorama of width w and height h as an infinite data structure, where each pixel $P(x, y)$ of the input images represents the set of pixels $S_P(x, y)^2$.
MODE takes the following values:

‘none’
 ‘open’ This is a “no-op”; it has the same effect as not giving ‘**--wrap**’ at all. The set of input images is considered open at its boundaries.

‘horizontal’
 Wrap around horizontally:

$$S_P(x, y) = \{P(x + mw, y) : m \in \mathbb{Z}\}.$$

² Solid-state physicists will be reminded of the **BORN-VON KÁRMÁN boundary condition**.

This is useful for 360° horizontal panoramas as it eliminates the left and right borders.

‘vertical’

Wrap around vertically:

$$S_P(x, y) = \{P(x, y + nh) : n \in Z\}.$$

This is useful for 360° vertical panoramas, as it eliminates the top and bottom borders.

‘both’

‘horizontal+vertical’

‘vertical+horizontal’

Wrap around both horizontally and vertically:

$$S_P(x, y) = \{P(x + mw, y + nh) : m, n \in Z\}.$$

In this mode, both left and right borders, as well as top and bottom borders, are eliminated.

Specifying ‘--wrap’ without *MODE* selects horizontal wrapping.

3.3 Extended Options

Extended options control the image cache, the color model, and the cropping of the output image.

-b *BLOCKSIZE*

Set the *BLOCKSIZE* in kilobytes (KB) of Enfuse’s image cache.

This is the amount of data that Enfuse will move to and from the disk at one time. The default is 2048 KB, which should be ok for most systems. See [Chapter 6 \[Tuning Memory Usage\]](#), [page 33](#) for details.

Note that Enfuse must have been compiled with the image-cache feature for this option to be effective. Find out about extra features with **enfuse --version --verbose**.

-c

Use the CIECAM02 color appearance model for blending colors.

The input files should have embedded ICC profiles when this option is specified. If no ICC profile is present, Enfuse will assume that the image uses the sRGB color space. The difference between this option and Enfuse’s default color blending algorithm is slight, and will only be noticeable when areas of different primary colors are blended together.

-d

--depth=DEPTH

Force the number of bits per channel and the numeric format of the output image.

Enfuse always uses a smart way to change the channel depth, to assure highest image quality (at the expense of memory), whether requantization is implicit because of the output format or explicit with option ‘--depth’.

- If the output-channel width is larger than the input-channel width of the input images, the input images' channels are widened to the output channel width immediately after loading, that is, as soon as possible. Enfuse then performs all blending operations at the output-channel width, thereby preserving minute color details which can appear in the blending areas.
- If the output-channel width is smaller than the input-channel width of the input images, the output image's channels are narrowed only right before it is written to disk, that is, as late as possible. Thus the data benefits from the wider input channels for the longest time.

All *DEPTH* specifications are valid in lowercase as well as uppercase letters. For integer format use

8, uint8 Unsigned 8 bit; range: 0..255
 int16 Signed 16 bit; range: -32768..32767
 16, uint16 Unsigned 16 bit; range: 0..65535
 int32 Signed 32 bit; range: -2147483648..2147483647
 32, uint32 Unsigned 32 bit; range: 0..4294967295

For floating-point format use

r32, real32, float
 IEEE754 single precision floating-point, 32 bit wide, 24 bit significant

- Minimal normalized value: 1.2×10^{-38}
- Epsilon: 1.2×10^{-7}
- Maximal finite value: 3.4×10^{38}

r64, real64, double
 IEEE754 double precision floating-point, 64 bit wide, 53 bit significant

- Minimal normalized value: 2.2×10^{-308}
- Epsilon: 2.2×10^{-16}
- Maximal finite value: 1.8×10^{308}

If the requested *DEPTH* is not supported by the output file format, Enfuse warns and chooses the *DEPTH* that matches best.

The OpenEXR data format is treated as IEEE754 float internally. Externally, on disk, OpenEXR data is represented by “half” precision floating-point numbers.

OpenEXR half precision floating-point, 16 bit wide, 10 bit significant

- Minimum normalized value: 9.3×10^{-10}
- Epsilon: 2.0×10^{-3}
- Maximum finite value: 4.3×10^9

-f *WIDTH*×*HEIGHT*

-f *WIDTH*×*HEIGHT*+*xX-OFFSET*+*yY-OFFSET*

Set the size of the output image manually to *WIDTH*×*HEIGHT*. Optionally specify the *X-OFFSET* and *Y-OFFSET*, too.

This option is useful when the input images are cropped TIFF files, such as those produced by **nona**. The stitcher **nona** is part of Hugin. See [Chapter 8 \[Helpful Programs\]](#), page 46.

-g Save alpha channel as “associated”. See the [TIFF documentation](#) for an explanation.

Gimp (before version 2.0) and CinePaint (see [Chapter 8 \[Helpful Programs\]](#), page 46) exhibit unusual behavior when loading images with unassociated alpha channels. Use option ‘-g’ to work around this problem. With this flag **Enfuse** will create the output image with the associated alpha tag set, even though the image is really unassociated alpha.

-m *CACHESIZE*

Set the *CACHESIZE* in megabytes (MB) of **Enfuse**’s image cache.

This is the amount of memory **Enfuse** will use for storing image data before swapping to disk. The default is 1024 MB, which is good for systems with 3–4 gigabytes (GB) of RAM. See [Chapter 6 \[Tuning Memory Usage\]](#), page 33 for details.

Note that **Enfuse** must have been compiled with the image-cache feature for this option to be effective. Find out about extra features with **enfuse --version --verbose**.

3.4 Fusion Options

Fusion options define the proportion to which each input image’s pixel contributes to the output image.

--contrast-weight=*WEIGHT*

(This option supersedes the deprecated option ‘--wContrast’.)

Sets the relative *WEIGHT* of high local-contrast pixels. Default: 0.0. Valid range: $0 \leq \textit{WEIGHT} \leq 1$.

See [Section 4.4 \[Local Contrast Weighting\]](#), page 24 and [Section 3.5 \[Expert Options\]](#), page 14.

--entropy-weight=*WEIGHT*

(This option supersedes the deprecated option ‘--wEntropy’.)

Sets the relative *WEIGHT* of high local entropy pixels. Default: 0.0. Valid range: $0 \leq \textit{WEIGHT} \leq 1$.

See [Section 4.5 \[Local Entropy Weighting\]](#), page 28 and [Section 3.5 \[Expert Options\]](#), page 14.

--exposure-weight=*WEIGHT*

(This option supersedes the deprecated option ‘--wExposureMu’.)

Sets the relative *WEIGHT* of the well-exposedness criterion. Increasing this weight relative to the others will make well-exposed pixels contribute more to the final output. Default: 1.0. Valid range: $0 \leq WEIGHT \leq 1$.

See [Section 4.2 \[Exposure Weighting\]](#), page 22.

`--exposure-mu=MEAN`

(This option supersedes the deprecated option ‘`--wExposureMu`’.)

Set the *MEAN* (this is, the center) of the Gaussian exposure weight curve. Default: 0.5. Valid range: $0 \leq MEAN \leq 1$.

Use this option to fine-tune exposure weighting (see [Section 4.2 \[Exposure Weighting\]](#), page 22).

`--exposure-sigma=STD-DEV`

(This option supersedes the deprecated option ‘`--wExposureSigma`’.)

Standard deviation *STD-DEV* of the Gaussian exposure weight curve. Default: 0.2. Low numbers give less weight to pixels that are far from ‘`--wMu`’ and vice versa. Valid range: $0 \leq STD-DEV$.

Use this option to fine-tune exposure weighting (see [Section 4.2 \[Exposure Weighting\]](#), page 22).

`--saturation-weight=WEIGHT`

(This option supersedes the deprecated option ‘`--wSaturation`’.)

Sets the relative *WEIGHT* of high-saturation pixels. Increasing this weight makes pixels with high saturation contribute more to the final output. Default: 0.2. Valid range: $0 \leq WEIGHT \leq 1$.

Saturation weighting is only defined for color images. See [Section 4.3 \[Saturation Weighting\]](#), page 23.

3.5 Expert Options

Expert options influence the workings of Enfuse that require the user to read the manual before applying them successfully.

`--contrast-window-size=SIZE`

(This option supersedes the deprecated option ‘`--ContrastWindowSize`’.)

Set the window *SIZE* for local contrast analysis. The window will be a square of *SIZE* × *SIZE* pixels.

For contrast analysis *SIZE* values larger than 5 might result in a blurry composite image. Values of 3 and 5 have given good results on focus stacks.

Valid range: *SIZE* ≥ 3.

If given an even *SIZE*, Enfuse will automatically use the next odd number.

See also [Section 3.4 \[Fusion Options\]](#), page 13 and ‘`--hard-mask`’ below.

`--contrast-edge-scale=EDGE-SCALE`

`--contrast-edge-scale=EDGE-SCALE:LCE-SCALE:LCE-FACTOR`

(This option supersedes the deprecated option ‘`--EdgeScale`’.)

A non-zero value for *EDGE-SCALE* switches on the Laplacian-of-Gaussian (LoG) edge detection algorithm. *EDGE-SCALE* is the radius of the Gaussian used in the search for edges. Default: 0.0 pixels.

A positive *LCE-SCALE* turns on local contrast enhancement (LCE) before the LoG edge detection. *LCE-SCALE* is the radius of the Gaussian used in the enhancement step, *LCE-FACTOR* is the weight factor (“strength”).

$$\begin{aligned} enhanced &= (1 + LCE-FACTOR) \textit{original} \\ &\quad - LCE-FACTOR \text{GaussianSmooth}(\textit{original}, LCE-SCALE) \end{aligned}$$

LCE-SCALE defaults to 0.0 pixels and *LCE-FACTOR* defaults to 0.0. Append ‘%’ to *LCE-SCALE* to specify the radius as a percentage of *EDGE-SCALE*. Append ‘%’ to *LCE-FACTOR* to specify the weight as a percentage.

```
--entropy-cutoff=LOWER-CUTOFF
--entropy-cutoff=LOWER-CUTOFF:UPPER-CUTOFF
(This option supersedes the deprecated option '--EntropyCutoff'.)
```

The first form defines the lower cutoff value below which pixels are treated as pure black when calculating the local entropy. The second form also defines the upper cutoff value above which pixels are treated as pure white.

For color images *LOWER-CUTOFF* and *UPPER-CUTOFF* are applied separately and independently to each channel.

Defaults: 0% for *LOWER-CUTOFF* and 100% for *UPPER-CUTOFF*, that is, all pixels’ values are taken into account. Append a ‘%’ to specify the cutoff relative to maximum pixel value in the source image (for example 255 or 65535).

Figure 3.1 shows an example.

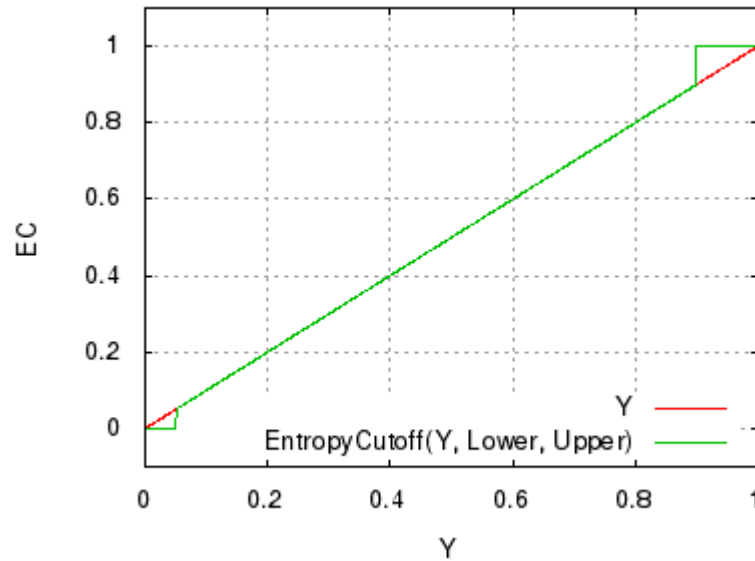


Figure 3.1: Linear lightness Y in comparison with an entropy-cutoff function for $LOWER-CUTOFF = 5\%$ and $UPPER-CUTOFF = 90\%$ which are rather extreme values.

Note that a high $LOWER-CUTOFF$ value lightens the resulting image, as dark (and presumably noisy) pixels are averaged with *equal* weights. With ‘`--entropy-cutoff=0`’, the default, on the other hand, “noise” might be interpreted as high entropy and the noisy pixels get a high weight, which in turn renders the resulting image darker. Analogously, a low $UPPER-CUTOFF$ darkens the output image.

`--entropy-window-size=SIZE`

(This option supersedes the deprecated option ‘`--EntropyWindowSize`’.)

Window $SIZE$ for local entropy analysis. The window will be a square of $SIZE \times SIZE$ pixels.

In the entropy calculation $SIZE$ values of 3 to 7 yield an acceptable compromise of the locality of the information and the significance of the local entropy value itself.

Valid range: $SIZE \geq 3$.

If given an even $SIZE$ Enfuse will automatically use the next odd number.

`--gray-projector=PROJECTOR`

(This option supersedes the deprecated option ‘`--GrayProjector`’.)

Use gray projector $PROJECTOR$ for conversion of RGB images to grayscale masks: $(R, G, B) \rightarrow Y$.

In version 4.0-753b534c819d of Enfuse, the option is effective for exposure weighting and local contrast weighting. Default: ‘`average`’.

Valid values for $PROJECTOR$ are:

average Average red, green, and blue channel with equal weights. This is the default, and it often is a good projector for $\gamma = 1$ data.

$$Y = \frac{R + G + B}{3}$$

channel-mixer:RED-WEIGHT:GREEN-WEIGHT:BLUE-WEIGHT
Weight the channels as given.

$$Y = \text{RED-WEIGHT} \times R + \text{GREEN-WEIGHT} \times G + \text{BLUE-WEIGHT} \times B$$

The weights are automatically normalized to one, so

```
--gray-projector=channel-mixer:0.25:0.5:0.25
--gray-projector=channel-mixer:1:2:1
--gray-projector=channel-mixer:25:50:25
```

all define the same mixer configuration.

The three weights *RED-WEIGHT*, *GREEN-WEIGHT*, and *BLUE-WEIGHT* define the relative weight of the respective color channel. The sum of all weights is normalized to one.

l-star Use the L-channel of the L*a*b*-conversion of the image as its grayscale representation. This is a useful projector for $\gamma = 1$ data. It reveals minute contrast variations even in the shadows and the highlights. This projector is computationally expensive. See [Wikipedia](#) for a detailed description of the Lab color space.

lightness Compute the lightness of each RGB pixel as in an Hue-Saturation-Lightness (HSL) conversion of the image.

$$Y = \frac{\max(R, G, B) + \min(R, G, B)}{2}$$

luminance Use the weighted average of the RGB pixel's channels as defined by CIE ("Commission Internationale de l'Éclairage") and the JPEG standard.

$$Y = 0.30 R + 0.59 G + 0.11 B$$

value Take the Value-channel of the Hue-Saturation-Value (HSV) conversion of the image.

$$Y = \max(R, G, B)$$

--hard-mask

(This option supersedes the deprecated option '**--HardMask**'.)

Force hard blend masks on the finest scale. This is the opposite flag of ‘`--soft-mask`’.

This blending mode avoids averaging of fine details (only) at the expense of increasing the noise. However it considerably improves the sharpness of focus stacks. Blending with hard masks has only proven useful with focus stacks.

See also [Section 3.4 \[Fusion Options\]](#), page 13 and ‘`--contrast-window-size`’ above.

`--contrast-min-curvature=CURVATURE`

(This option supersedes the deprecated option ‘`--MinCurvature`’.)

Define the minimum *CURVATURE* for the LoG edge detection. Default: 0. Append a ‘`%`’ to specify the minimum curvature relative to maximum pixel value in the source image (for example 255 or 65535).

A positive value makes Enfuse use the local contrast data (controlled with ‘`--contrast-window-size`’) for curvatures less than *CURVATURE* and LoG data for values above it.

A negative value truncates all curvatures less than $-CURVATURE$ to zero. Values above *CURVATURE* are left unchanged. This effectively suppresses weak edges.

`--save-masks`

`--save-masks=SOFT-MASK-TEMPLATE`

`--save-masks=SOFT-MASK-TEMPLATE:HARD-MASK-TEMPLATE`

(This option supersedes the deprecated option ‘`--SaveMasks`’.)

Save all weight files as TIFF images. First form: Save all soft weight masks in files. If option ‘`--hard-mask`’ is effective also save the hard masks. The defaults are ‘`softmask-%n.tif`’ and ‘`hardmask-%n.tif`’. In the second form, *SOFT-MASK-TEMPLATE* defines the names of the soft-mask files. In the third form, *HARD-MASK-TEMPLATE* additionally defines the names of the hard-mask files.

Both *SOFT-MASK-TEMPLATE* and *HARD-MASK-TEMPLATE* define templates that are expanded for each mask file. In a template a percent sign (‘`%`’) introduces a variable part. All other characters are copied literally. Lowercase letters refer to the name of the respective input file, whereas uppercase ones refer to the name of the output file (see [Section 3.2 \[Common Options\]](#), page 8). [Table 3.4](#) lists all variables.

A fancy mask filename template could look like this:

```
%D/soft-mask-%02n-%f.viff
```

It puts the mask files into the same directory as the output file (‘`%D`’), generates a two-digit index (‘`%02n`’) to keep the mask files nicely sorted, and decorates the mask filename with the name of the associated input file (‘`%f`’) for easy recognition.

`--soft-mask`

(This option supersedes the deprecated option ‘`--SoftMask`’.)

Consider all masks when fusing. This is the default.

<code>%%</code>	Produces a literal ‘%’-sign.
<code>%i</code>	<p>Expands to the index of the mask file starting at zero.</p> <p>‘%i’ supports setting a pad character or a width specification:</p> <p style="text-align: center;"><code>% PAD WIDTH i</code></p> <p><i>PAD</i> is either ‘0’ or any punctuation character; the default pad character is ‘0’. <i>WIDTH</i> is an integer specifying the minimum width of the number. The default is the smallest width given the number of input images, this is 1 for 2–9 images, 2 for 10–99 images, 3 for 100–999 images, and so on.</p> <p>Examples: ‘%i’, ‘%02i’, or ‘%_4i’.</p>
<code>%n</code>	Expands to the number of the mask file starting at one. Otherwise it behaves identically to ‘%i’, including pad character and width specification.
<code>%p</code>	<p>This is the full name (path, filename, and extension) of the input file associated with the mask.</p> <p>Example: If the input file is called ‘/home/luser/snap/img.jpg’, ‘%p’ expands to ‘/home/luser/snap/img.jpg’, or shorter: ‘%p’ ⇒ ‘/home/luser/snap/img.jpg’.</p>
<code>%P</code>	This is the full name of the output file.
<code>%d</code>	<p>Is replaced with the directory part of the associated input file. See Info file ‘coreutils.info’, node ‘dirname invocation’.</p> <p>Example (cont.): ‘%d’ ⇒ ‘/home/luser/snap’.</p>
<code>%D</code>	Is replaced with the directory part of the output file.
<code>%b</code>	<p>Is replaced with the non-directory part (often called “basename”) of the associated input file. See Info file ‘coreutils.info’, node ‘basename invocation’.</p> <p>Example (cont.): ‘%b’ ⇒ ‘img.jpg’.</p>
<code>%B</code>	Is replaced with the non-directory part of the output file.
<code>%f</code>	<p>Is replaced with the filename without path and extension of the associated input file.</p> <p>Example (cont.): ‘%f’ ⇒ ‘img’.</p>
<code>%F</code>	Is replaced with the filename without path and extension of the output file.
<code>%e</code>	<p>Is replaced with the extension (including the leading dot) of the associated input file.</p> <p>Example (cont.): ‘%e’ ⇒ ‘.jpg’.</p>
<code>%E</code>	Is replaced with the extension of the output file.

Table 3.4: Special characters to control the generation of mask filenames.

3.6 Option Delimiters

Enfuse allows the arguments supplied to the program's options to be separated by different separators. The online documentation and this manual, however, exclusively use the colon ':' in every syntax definition and in all examples.

Numeric Arguments

Valid delimiters are the the semicolon ';', the colon ':', and the slash '/'. All delimiters may be mixed within any option that takes numeric arguments.

Examples:

```
'--contrast-edge-scale=0.667:6.67:3.5'
    Separate all arguments with colons.
'--contrast-edge-scale=0.667;6.67;3.5'
    Use semi-colons.
'--contrast-edge-scale=0.667;6.67/3.5'
    Mix semicolon and slash in weird ways.
'--entropy-cutoff=3%/99%'
    All delimiters also work in conjunction with percentages.
'--gray-projector=channel-mixer:3/6/1'
    Separate arguments with a colon and two slashes.
'--gray-projector=channel-mixer/30;60:10'
    Go wild and Enfuse will understand.
```

Filename Arguments

Here, the accepted delimiters are ',', ';', and ':'. Again, all delimiters may be mixed within any option that has filename arguments.

Examples:

```
'--save-masks=soft-mask-%03i.tif:hard-mask-03%i.tif'
    Separate all arguments with colons.
'--save-masks=%d/soft-%n.tif,%d/hard-%n.tif'
    Use a comma.
```

4 Weighting Functions

As has been noted in the Overview (see [Chapter 1 \[Overview\]](#), page 1), Enfuse supports four different types of weighting. The following subsections describe the concept of weighting and all weighting functions in detail.

4.1 Weighting Pixels

Image fusion maps each pixel $P(i, x, y)$ of every input image i to a single pixel $Q(x, y)$ in the output image:

$$P(i, x, y) \rightarrow Q(x, y),$$

where x runs from 1 to the common width of the images, y from 1 to the common height, and i from 1 to the number of input images n .

Enfuse allows for weighting the contribution of each $P(i, x, y)$ to the final $Q(x, y)$:

$$w(P(1, x, y))P(1, x, y) + \dots + w(P(n, x, y))P(n, x, y) \rightarrow Q(x, y), \quad (\text{W})$$

where

- each w is non-negative to yield a physical intensity and
- the sum of all w is one to leave the total intensity unchanged.

The pixel weights w themselves are weighted sums with the same constraints

$$\begin{aligned} w(P) = & w_{\text{exp}} f_{\text{exp}}(P) + \\ & w_{\text{sat}} f_{\text{sat}}(P) + \\ & w_{\text{cont}} f_{\text{cont}}(P, r_{\text{cont}}) + \\ & w_{\text{ent}} f_{\text{ent}}(P, r_{\text{ent}}), \end{aligned}$$

where we have abbreviated $P(i, x, y)$ to P for simplicity. The user defines the constants w_{exp} , w_{sat} , w_{cont} , and w_{ent} with the options ‘--exposure-weight’, ‘--saturation-weight’, ‘--contrast-weight’, and ‘--entropy-weight’ respectively. The functions f_{exp} , f_{sat} , f_{cont} , and f_{ent} along with the window sizes r_{cont} and r_{ent} are explained in the next sections.

4.1.1 Weighted Average

By default, Enfuse uses a weighted average, where *each* pixel contributes as much as its weight demands. Of course the weights can be extreme, favoring only a few pixels or even only one pixel in the input stack. Extremes are not typical, however.

Equal weights are another extreme that turns (W) into an arithmetic average. This is why we sometimes speak of the “averaging property” of this weighting algorithm, like smoothing out noise.

4.1.2 Disabling Averaging: Option ‘--hard-mask’

The weighted average computation as described above has proven to be widely successful with the exception of one special case: focus stacking (see [Section 7.6 \[Focus Stacks\]](#), [page 38](#)), where the averaging noticeably softens the final image.

Use ‘--hard-mask’ to switch Enfuse into a different (“Super Trouper”) weighting mode, where the pixel with the highest weight wins, this is, gets weight one, and all other pixels get the weight of zero (“[The Winner Takes It All.](#)”). With ‘--hard-mask’ Equation (W) becomes

$$P(i, x, y) \rightarrow Q(x, y), \text{ where } w(P(i, x, y)) \geq w(P(j, x, y)) \text{ for all } 1 \leq j \leq n.$$

Note that this “averaging” scheme lacks the nice noise-reduction property of the weighted average (W), because only a single input pixel contributes to the output.

4.2 Exposure Weighting

Exposure weighting prefers pixels with a luminance Y close to the center of the normalized, real-valued luminance interval $[0, 1]$.

RGB-pixels get converted to luminance using the grayscale projector given by ‘--gray-projector’, which defaults to **average**. Grayscale pixels are identified with luminance.

In the normalized luminance interval 0.0 represents pure black and 1.0 represents pure white independently of the data type of the input image. This is, for a JPEG image the luminance 255 maps to 1.0 in the normalized interval and for a 32 bit TIFF picture the highest luminance value 4294967295 also maps to 1.0. The middle of the luminance interval, 0.5, is where a neutral gray tone ends up with every camera that had no exposure correction dialed in, for example the image of a gray- or white-card.

The exposure weighting algorithm only looks at a single pixel at a time; the pixel’s neighborhood is not taken into account.

The weighting function is the Gaussian

$$w_{\text{exp}}(Y) = \exp \left(-\frac{1}{2} \left(\frac{Y - Mu}{Sigma} \right)^2 \right),$$

whose center Mu and width $Sigma$ are controlled by the command line options ‘--exposure-mu’ and ‘--exposure-sigma’ respectively. Mu defaults to 0.5 and $Sigma$ defaults to 0.2. [Figure 4.1](#) shows a Gaussian.

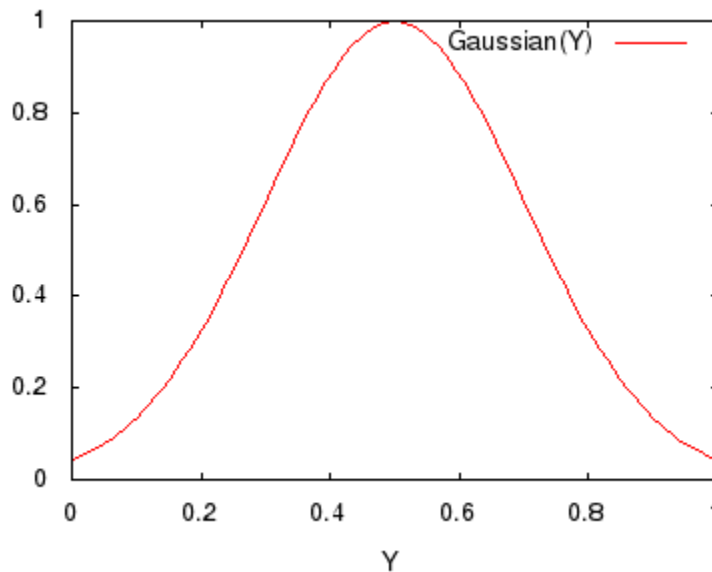


Figure 4.1: Gaussian function with the parameters $\mu = 0.5$ and $\sigma = 0.2$.

The options ‘`--exposure-mu`’ and ‘`--exposure-sigma`’ are for fine-tuning the final result without changing the set of input images. Option ‘`--exposure-mu`’ sets the point μ of optimum exposure. Increasing μ makes Enfuse prefer lighter pixels, rendering the final image lighter, and vice versa. Option ‘`--exposure-sigma`’ defines the range σ of acceptable exposures. Small values of σ penalize exposures that deviate from μ more, and vice versa.

Summary of influential options

‘`--exposure-weight`’
[Section 3.4 \[Fusion Options\], page 13](#)

‘`--exposure-mu`’
[Section 3.4 \[Fusion Options\], page 13](#)

‘`--exposure-sigma`’
[Section 3.4 \[Fusion Options\], page 13](#)

‘`--gray-projector`’
[Section 3.5 \[Expert Options\], page 14](#)

4.3 Saturation Weighting

Saturation weighting prefers pixels with a high saturation.

Enfuse computes the saturation of a pixel according to the following algorithm.

```

max := maximum(R, G, B)
min := minimum(R, G, B)
if max = min then
    saturation := 0
else
    sum := max + min
    difference := max - min
    if sum ≤ 1 then
        saturation := difference / sum
    else
        saturation := difference / (2 - sum)
    end if
end if

```

Obviously, saturation weighting can only be defined for RGB images, not for grayscale ones! If you need something similar, check out [Section 4.5 \[Local Entropy Weighting\]](#), page 28; entropy weighting works for both RGB and grayscale pictures.

The saturation weighting algorithm only looks at a single pixel at a time; the pixel’s neighborhood is not taken into account.

Summary of influential options

```

‘--saturation-weight’
    Section 3.4 \[Fusion Options\], page 13

```

4.4 Local Contrast Weighting

Local contrast weighting favors pixels inside a high contrast neighborhood. The notion of “high contrast” is defined either by two different criteria or by a blend of both:

- The standard deviation (SDev) of all the pixels in the local analysis window is large. See [Section 4.4.1 \[Standard Deviation\]](#), page 24.
- The Laplacian-of-Gaussian (LoG) has a large magnitude. See [Section 4.4.2 \[Laplacian of Gaussian\]](#), page 26.
- If the LoG magnitude is below a given threshold, use SDev data, otherwise stick with LoG. See [Section 4.4.3 \[Blend SDev and LoG\]](#), page 28.

Enfuse converts every RGB image to grayscale before it determines its contrast. Option ‘--gray-projector’ (see [Section 3.5 \[Expert Options\]](#), page 14) controls the projector function. Depending on the subject, one of several grayscale projectors may yield the best black-and-white contrast for image fusion.

In the following sections we describe each algorithm in detail.

4.4.1 Standard Deviation

The pixel under consideration *C* sits exactly in the center of a square, the so-called *local analysis window*. It always has an uneven edge length. The user sets the size with option ‘--contrast-window-size’. [Figure 4.2](#) shows two windows with different sizes.

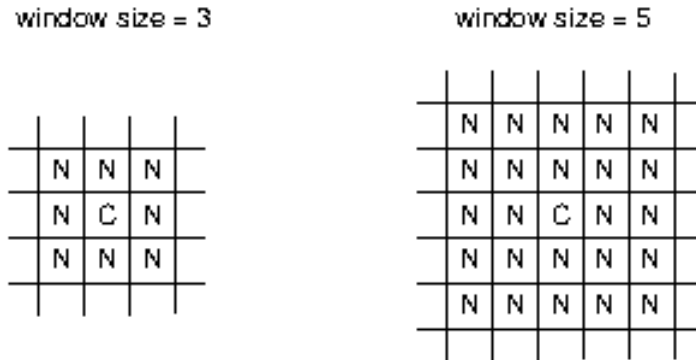


Figure 4.2: Examples of local analysis windows for the sizes 3 and 5. “C” marks the center where the pixel gets the weight. “N” are neighboring pixels, which all contribute equally to the weight.

During the analysis, Enfuse scans the local analysis window across all rows and all columns¹ of each of the input images to compute the contrast weight of every pixel.

Summary of influential options

- ‘--contrast-weight’
Section 3.4 [Fusion Options], page 13
- ‘--hard-mask’
Section 3.4 [Fusion Options], page 13
- ‘--contrast-window-size’
Section 3.5 [Expert Options], page 14
- ‘--gray-projector’
Section 3.5 [Expert Options], page 14

4.4.1.1 Statistical Moments

We start with the *probability function* w of the random variable X :

$$w : x \rightarrow p(\{\omega : X(\omega) = x\}).$$

It associates a probability p with each of the n different possible outcomes ω of the random variable X . Based on w , we define the *expectation value* or “First Moment” of the random variable X :

$$\text{Ex } X := \sum_{i=1}^n x_i w(x_i).$$

Using the definition of the expectation value, we define the *variance*, or “Second Moment” as

$$\text{Var } X := \text{Ex } ((X - \text{Ex } X)^2),$$

¹ In the current implementation a `floor(contrast-window-size / 2)` wide border around the images remains unprocessed and gets a weight of zero.

and the *standard deviation* as

$$\sigma X := \sqrt{\text{Var } X}.$$

Obviously, the variance of X is the expectation value of the squared deviation from the expectation value of X itself. Note that the variance's dimension is X 's dimension squared; the standard deviation rectifies the dimension to make it comparable with X itself again.

4.4.1.2 Estimators

In Enfuse, we assume that X follows a uniform probability function $w(x) = \text{const.}$ That is, all pixel values in the local analysis window are considered to be equally probable. Thus, the expectation value and the variance can be estimated from the pixel values like this

$$\text{Ex } X := \frac{1}{n} \sum_{i=1}^n x_i.$$

In other words: the expectation value is the arithmetic mean of the lightness of all pixels in the local analysis window. Analogously, the variance becomes

$$\text{Var } X := \frac{1}{n-1} \text{Ex } ((X - \text{Ex } X)^2).$$

4.4.2 Laplacian of Gaussian

The *Laplacian of Gaussian* (LoG) is an operator to detect edges in an image. Sometimes the LoG-operator is also called MARR-HILDRETH operator. A Laplacian-of-Gaussian operator, `vigra::laplacianOfGaussian` is part of the package **VIGRA** that Enfuse is built upon and is used for edge detection if option ‘`--contrast-edge-scale`’ is non-zero and ‘`--contrast-min-curvature`’ equal to or less than zero.

Let the Gaussian function be

$$g(x, y) = \frac{1}{2\pi\sigma^2} \exp\left(-\frac{x^2 + y^2}{2\sigma^2}\right)$$

The parameter σ , the argument of option ‘`--contrast-edge-scale`’, is the length scale on which edges are detected by $g(x, y)$. We apply the Laplacian operator in Cartesian coordinates

$$\Delta \equiv \nabla \cdot \nabla = \frac{\partial^2}{\partial x^2} + \frac{\partial^2}{\partial y^2}$$

to $g(x, y)$, to arrive at a continuous representation of the two-dimensional filter kernel

$$k(x, y) = \frac{\xi^2 - 1}{\pi\sigma^4} \exp(-\xi^2),$$

where we have used the dimensionless distance ξ from the origin

$$\xi^2 = \frac{x^2 + y^2}{2\sigma^2}.$$

Enfuse uses a discrete approximation of k in the convolution with the image. The operator is radially symmetric with respect to the origin, which is why we can easily plot it in Figure 4.3, setting $R = \sqrt{x^2 + y^2}$.

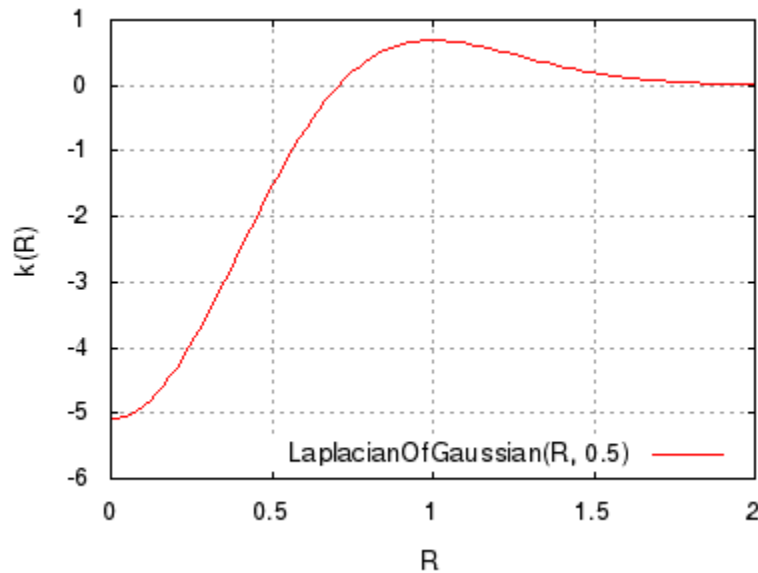


Figure 4.3: Laplacian-of-Gaussian function for $\sigma = 0.5$.

See also [HIPR2: Laplacian of Gaussian](#).

Sometimes the LoG is plagued by noise in the input images. After all, it is a numerical approximation of the second derivative and deriving always “roughens” a function. The (normalized) mask files relentlessly disclose such problems. Use option ‘`--contrast-min-curvature`’ with a *negative* argument *CURVATURE* to suppress all edges with a curvature below $-CURVATURE$ (which is a positive value). Check the effects with the mask files and particularly the hard-mask files (`hardmask-%n.tif`) if using option ‘`--hard-mask`’.

To indicate the *CURVATURE* in relative terms, which is particularly comprehensible for humans, append a percent sign (%). Try minimum curvatures starting from -0.5% to -3% .

Summary of influential options

‘`--contrast-weight`’
[Section 3.4 \[Fusion Options\], page 13](#)

‘`--hard-mask`’
[Section 3.4 \[Fusion Options\], page 13](#)

‘`--contrast-edge-scale`’
[Section 3.5 \[Expert Options\], page 14](#)

‘`--contrast-min-curvature`’
[Section 3.5 \[Expert Options\], page 14](#)

4.4.3 Blend Standard Deviation and Laplacian of Gaussian

Enfuse can team the standard deviation computation and Laplacian of Gaussian to deliver the best of both methods. Use a *positive* argument *CURVATURE* with option ‘`--contrast-min-curvature`’ to combine both algorithms. In this mode of operation Enfuse computes the SDev-weight and the LoG-weight, then uses the LoG to decide whether to go with that value or prefer the SDev data. If the LoG is greater than *CURVATURE* Enfuse uses the weight delivered by the LoG, otherwise the SDev-weight is rescaled such that its maximum is equal to *CURVATURE*, and the scaled SDev is used as weight.

This technique merges the two edge detection methods where they are best. The LoG excels with clear edges and cannot be fooled by strong but smooth gradients. However, it is bad at detecting faint edges and it is susceptible to noise. The SDev on the other hand shines with even the most marginal edges, and resists noise quite well. Its weakness is that it is easily deceived by strong and smooth gradients. Tuning *CURVATURE* the user can pick the best threshold for a given set of images.

Summary of influential options

- ‘`--contrast-weight`’
Section 3.4 [Fusion Options], page 13
- ‘`--hard-mask`’
Section 3.4 [Fusion Options], page 13
- ‘`--contrast-window-size`’
Section 3.5 [Expert Options], page 14
- ‘`--gray-projector`’
Section 3.5 [Expert Options], page 14
- ‘`--contrast-edge-scale`’
Section 3.5 [Expert Options], page 14
- ‘`--contrast-min-curvature`’
Section 3.5 [Expert Options], page 14

4.4.4 Scaling and Choice of Mode

Experience has shown that neither the parameters *EDGESCALE* and *CURVATURE* nor the mode of operation (SDev-only, LoG-only, or a blend of both) scales to different image sizes. In practice, this means that if you start with a set of reduced size images, say 2808×1872 pixels, carefully optimize *EDGESCALE*, *CURVATURE* and so on, and find LoG-only the best mode, and then switch to the original resolution of 5616×3744 pixels, multiplying (or dividing) the parameters by four and sticking to LoG-only might *not* result in the best fused image. For best quality, perform the parameter optimization and the search for the most appropriate mode at the final resolution.

4.5 Local Entropy Weighting

Entropy weighting prefers pixels inside a high entropy neighborhood.

Let S be an n -ary source. Watching the output of S an observer on average gains the information

$$H_a(n) := \sum_{x \in S} p(x) \log_a(1/p(x))$$

per emitted message, where we assume the knowledge of the probability function $p(S)$. The expectation value $H_a(n)$ is called *entropy* of the source S . Entropy measures our uncertainty if we are to guess which message gets chosen by the source in the future. The unit of the entropy depends on the choice of the constant $a > 1$. Obviously

$$H_b(n) = H_a(n) / \log_a(b)$$

holds for all $b > 1$. We use $a = 2$ for entropy weighting and set the entropy of the “impossible message” to zero according to

$$\lim_{p \rightarrow 0} p \log_a(1/p) = 0.$$

Figure 4.4 shows an entropy function.

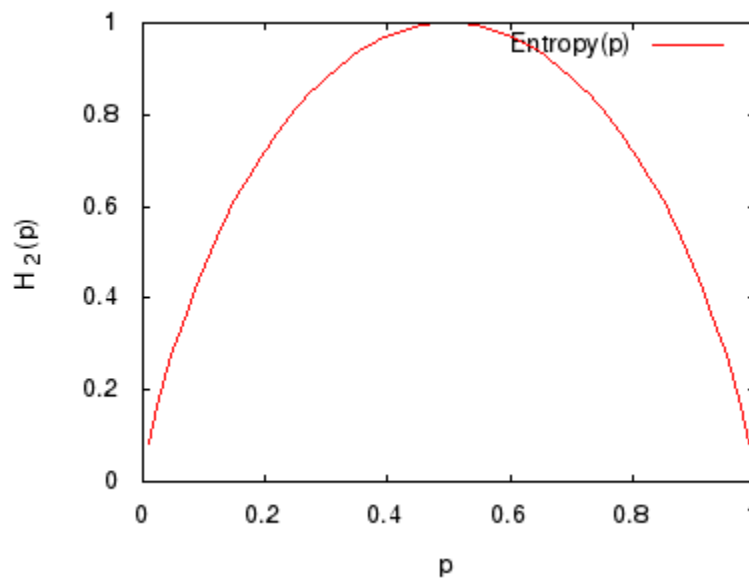


Figure 4.4: Entropy function H for an experiment with exactly two outcomes.

For more on (information) entropy visit [Wikipedia](#).

Enfuse computes a pixel’s entropy by considering the pixel itself and its surrounding pixels quite similar to [Section 4.4 \[Local Contrast Weighting\]](#), [page 24](#). The size of the window is set by ‘`--entropy-window-size`’. Choosing the right size is difficult, because there is a serious tradeoff between the locality of the data and the size of the sample used to compute H . A large window results in a large sample size and therefore in a reliable entropy, but considering pixels far away from the center degrades H into a non-local measure. For small windows the opposite holds true.

Another difficulty arises from the use of entropy as a weighting function in dark parts of an image, that is, in areas where the signal-to-noise ratio is low. Without any precautions, high noise is taken to be high entropy, which might not be desired. Use option ‘--entropy-cutoff’ to control the black level when computing the entropy.

On the other extreme side of lightness, very light parts of an image, the sensor might already have overflowed without the signal reaching 1.0 in the normalized luminance interval. For these pixels the entropy is zero and Enfuse can be told of the threshold by properly setting the second argument of ‘--entropy-cutoff’.

Summary of influential options

‘--entropy-weight’

Section 3.4 [Fusion Options], page 13

‘--entropy-window-size’

Section 3.5 [Expert Options], page 14

‘--entropy-cutoff’

Section 3.5 [Expert Options], page 14

5 Understanding Masks

A *binary mask* indicates for every pixel of an image if this pixel must be considered in further processing, or ignored. For a *weight mask*, the value of the mask determines how much the pixel contributes, zero again meaning “no contribution”.

Masks arise in two places: as part of the input files and as separate files, showing the actual pixel weights prior to image blending or fusion. We shall explore both occurrences in the next sections.

5.1 Masks in Input Files

Each of the input files for Enfuse and Enblend can contain its own mask. Both applications interpret them as binary masks no matter how many bits per image pixel they contain.

Use ImageMagick’s `identify` or, for TIFF files, `tiffinfo` to inquire quickly whether a file contains a mask. [Chapter 8 \[Helpful Programs\]](#), [page 46](#) shows where to find these programs on the web.

```
$ identify -format "%f %m %wx%h %r %q-bit" remapped-0000.tif
remapped-0000.tif TIFF 800x533 DirectClassRGBMatte 8-bit
                        ~~~~~ mask

$ tiffinfo remapped-0000.tif
TIFF Directory at offset 0x1a398a (1718666)
  Subfile Type: (0 = 0x0)
  Image Width: 800 Image Length: 533
  Resolution: 150, 150 pixels/inch
  Position: 0, 0
  Bits/Sample: 8
  Sample Format: unsigned integer
  Compression Scheme: PackBits
  Photometric Interpretation: RGB color
  Extra Samples: 1<unassoc-alpha>          <<<<< mask
  Orientation: row 0 top, col 0 lhs
  Samples/Pixel: 4                         <<<<< R, G, B, and mask
  Rows/Strip: 327
  Planar Configuration: single image plane
```

The “Matte” part of the image class and the “Extra Samples” line tell us that the file features a mask. Also, many interactive image manipulation programs show the mask as a separate channel, sometimes called “Alpha”. There, the white (high mask value) parts of the mask enable pixels and black (low mask value) parts suppress them.

The multitude of terms all describing the concept of a mask is confusing.

Mask A mask defines a selection of pixels. A value of zero represents an unselected pixel. The maximum value (“white”) represents a selected pixel and the values between zero and the maximum are partially selected pixels. See [Gimp-Savy](#).

Alpha Channel

The alpha channel stores the transparency value for each pixel, typically in the range from zero to one. A value of zero means the pixel is completely

transparent, thus does not contribute to the image. A value of one on the other hand means the pixel is completely opaque.

Matte The notion “matte” as used by ImageMagick refers to an inverted alpha channel, more precisely: $1 - \text{alpha}$. See [ImageMagick](#) for further explanations.

Enblend and Enfuse only consider pixels that have an associated mask value other than zero. If an input image does not have an alpha channel, Enblend warns and assumes a mask of all non-zero values, that is, it will use every pixel of the input image for fusion.

Stitchers like **nona** add a mask to their output images.

Sometimes it is helpful to manually modify a mask before fusion. For example to suppress unwanted objects (insects and cars come into mind) that moved across the scene during the exposures. If the masks of all input images are black at a certain position, the output image will have a hole in that position.

5.2 Weight Mask Files

...

6 Tuning Memory Usage

The default configuration of Enblend and Enfuse assumes a system with 3–4 GB of RAM.

If Enblend and Enfuse have been compiled with the “image-cache” feature, they do not rely on the operating system’s memory management, but use their own image cache in the file system. To find out whether your version uses the image cache say

```
enblend --verbose --version
```

or

```
enfuse --verbose --version
```

Enblend and Enfuse put the file that holds the image cache either in the directory pointed to by the environment variable `TMPDIR`, or, if the variable is not set, in directory `/tmp`. It is prudent to ensure write permissions and enough of free space on the volume with the cache file.

The size of the image cache is user configurable with the option `-m CACHE-SIZE` (see [Section 3.3 \[Extended Options\], page 11](#)). Furthermore, option `-b BUFFER-SIZE` (see [Section 3.3 \[Extended Options\], page 11](#)) allows for fine-tuning the size of a single buffer inside the image cache. Note that *CACHE-SIZE* is given in megabytes, whereas the unit of *BUFFER-SIZE* is kilobytes.

Usually the user lets the operating system take care of the memory management of all processes. However, users of Enblend or Enfuse might want to control the balance between the operating systems’ [Virtual Memory](#) system and the image cache for several reasons.

- Paging in or out parts of a process’ image runs at kernel level and thus can make user processes appear unresponsive or “jumpy”. The caching mechanism of Enblend and Enfuse of course runs as a user process, which is why it has less detrimental effects on the system’s overall responsiveness.
- The image cache has been optimized for accesses to image data. All algorithms in Enblend and Enfuse have been carefully arranged to play nice with the image cache. An operating system’s cache has no knowledge of these particular memory access patterns.
- The disk access of the operating system to the swap device has been highly optimized. Enblend and Enfuse on the other hand use the standard IO-layer, which is a much slower interface.
- Limiting the amount of image cache prevents Enblend and Enfuse from eating up most or all RAM, thereby forcing all user applications into the swap.

The *CACHE-SIZE* should be set in such a way as to reconcile all of the above aspects even for the biggest data sets, that is, projects with many large images.

[Table 6.1](#) suggests some cache- and buffer-sizes for different amounts of available RAM.

RAM MB	CACHE-SIZE MB	BUFFER-SIZE KB	Comment
4096	1024	2048	default
2048	512–1024	1024	
1024	256–512	256–512	

Table 6.1: Suggested cache-size settings

On systems with considerably more than 4 GB of RAM it is recommended to run Enblend or Enfuse versions without image cache.

7 Applications of Enfuse

This section describes some of the novel possibilities that Enfuse offers the photographer. In contrast to the previous chapters, it centers around the image effects.

7.1 What Makes Images Fusable?

Images should align well to be suitable for fusion. However, there is no hard mathematical rule what “well” means. The alignment requirements for 16 MPixel images to yield a sharp 4"×6" print at 300 dpi (“dpi” means dots per inch) or even for web presentation are relatively low, whereas the alignment of 8 MPixel images for a 12"×18" print ought to be tight.

If the input images need to be aligned, Hugin (see [Chapter 8 \[Helpful Programs\], page 46](#)) is the tool of choice. It produces images exactly in the format that Enfuse expects.

Sometimes images naturally align extremely well so that no re-alignment is required. An image series with preprogrammed exposure steps taken in rapid succession where the camera is mounted on a heavy tripod and a humongous ball head, mirror lockup, and a cable release are used, comes to mind.

When in doubt about what will work, try it, and judge for yourself.

Useful ideas for a good alignment:

- Fix all camera parameters that are not explicitly varied.

Aperture Engage full manual (M) or aperture-priority (A) mode.

Auto-focus

Disable “Auto Focus”. Be aware that the auto-focus function could be linked to shutter-release button position “half pressed” or to the shutter release in insidious ways.

Closed eyepiece

(This applies only to single lens reflex cameras.) Close the eyepiece when using a cable release to suppress variations in stray light.

Exposure time/Shutter speed

Use the shortest possible exposure time or, in other words, use the fastest shutter speed to avoid blur caused by camera shake or motion blur.

Flash power

Explicitly control the flash power of *all* flashes. This is sometimes called “flash exposure lock”.

Sensitivity Disable “Auto ISO”.

White balance

Disable “Auto White Balance”. Instead, use the most suitable fixed white balance or take the white balance off a white card. When in doubt, use the setting “Daylight” or equivalent.

- Steady the camera by any means.
 - Apply your best camera bracing technique combined with controlled breathing.

- Prefer a monopod, or better, a rigid tripod with a heavy head.
- Use a cable release if possible.
- (This applies to cameras with a moving mirror only.) Engage “mirror lockup”.
- Consider automatic bracketing when applicable.
- Activate camera- or lens-based image stabilization if you are sure that it improves the image quality in your particular case; otherwise disengage the feature.

For some lens-based image stabilization systems, it is known that they “lock” into different positions every time they are activated. Moreover, some stabilization systems decrease the image quality when the lens is mounted on a tripod.

- Fire in rapid succession.

7.2 Repetition – Noise Reduction

Main Purpose: Reduce noise

With the default settings, Enfuse computes a weighted average of the input pixels. For a series of images, repeated with identical settings, this results in a reduction of (photon shot) noise. In other words, the dynamic range increases slightly, because the higher signal-to-noise ratio makes darker shades usable. Furthermore, smooth or glossy surfaces get a “cleaner” look, and edges become visually sharper. The nitty-gritty reportage look that sometimes stems from a high sensitivity setting disappears.

Averaged images, and therefore low-noise images, are the base for a multitude of techniques like, for example, differences. The most prominent method in this class is dark-frame subtraction.

The defaults set ‘`--exposure-weight=1.0`’ and ‘`--saturation-weight=0.2`’. Eliminating the saturation component with ‘`--saturation-weight=0.0`’ can be worth an extra run.

7.3 Exposure Series – Dynamic Range Increase

Main Purpose: Increase manageable dynamic range

An exposure series is a set of images taken with identical parameters except for the exposure time. Some cameras even provide special functions to automate recording exposure series. See the instruction manual of your model for details.

Enfuse’s defaults, ‘`--exposure-weight=1.0`’ and ‘`--saturation-weight=0.2`’ are well suited for fusion of *color* images. Remember that saturation weighting only works for RGB data. Option ‘`--saturation-weight`’ helps to control burnt-out highlights, as these are heavily desaturated. If no image suffers from troublesome highlights, the relative saturation weight can be reduced and even be set to zero. For black and white images ‘`--entropy-weight`’ can be an alternative to ‘`--saturation-weight`’ because it suppresses overexposed pixels, as these contain little information. However, entropy weighting is not limited to grayscale data; it has been successfully applied to RGB images, too. Note that saturation weighting considers *each* color channel of an RGB image separately and chooses the channel with the minimum entropy as representative for the whole pixel.

Enfuse offers the photographer tremendous flexibility in fusing differently exposed images. Whether you combine only two pictures or a series of 21, Enfuse imposes no limits

on you. Accordingly, the photographic effects achieved range from subtle to surreal, like the late 1980s “Max Headroom” TV-Series, to really unreal. Like some time ago in the chemical days of photography, when a new developer opened unseen possibilities for artists, exposure fusion extends a photographer’s expressive space in the digital age. Whether the results look good or bad, whether the images are dull or exciting, is entirely up to the artist.

In the next sections we give assistance to starters, and rectify several misconceptions about Enfuse.

7.3.1 Tips For Beginners

Here are some tips to get you in business quickly.

Include the best single exposure.

Include the exposure you would have taken if you did not use Enfuse in your series. It gives you a solid starting point. Think of the other images as augmenting this best single exposure to bring out the light and dark features you would like to see.

Begin with as small a number of images as possible.

Pre-visualizing the results of Enfuse is difficult. The more images put into the fusion process and the wider their EV-spacing is, the more challenging visualizing the output image becomes. Therefore, start off with as few images as possible.

You can take a larger series of images and only use part of it.

Start with a moderate EV-spacing.

As has been pointed out in the previous item, a wide EV-spacing makes pre-visualization harder. So start out with a spacing of $2/3$ EV to $1+1/3$ EV.

7.3.2 Common Misconceptions

Here are some surprisingly common misconceptions about exposure series.

A single image cannot be the source of an exposure series.

Raw-files in particular lend themselves to be converted multiple times and the results being fused together. The technique is simpler, faster, and usually even looks better than **digital blending** (as opposed to using a graduated neutral density filter) or **blending exposures** in an image manipulation program. Moreover, perfect alignment comes free of charge!

An exposure series must feature symmetrically-spaced exposures.

Twice wrong! Neither do the exposures have to be “symmetric” like $\{0 \text{ EV}, -2/3 \text{ EV}, +2/3 \text{ EV}\}$, nor does the number of exposures have to be odd. Series like $\{-1-1/3 \text{ EV}, -1/3 \text{ EV}, +1/3 \text{ EV}\}$ or $\{-1 \text{ EV}, 1 \text{ EV}\}$ might be just right. By the way, the order in which the images were taken does not matter either.

An exposure series must cover the whole dynamic range of the scene.

If you do not want to cover the whole range, you do not have to. Some HDR programs require the user to take a light probe,¹ whereas Enfuse offers the user complete freedom of exposure.

¹ Paul E. Debevec defines: “A *light probe* image is an omnidirectional, high dynamic range image that records the incident illumination conditions at a particular point in space.”

All exposure values must be different.

You can repeat any exposure as often as you like. That way you combine an exposure series with parts of [Section 7.2 \[Repetition\]](#), page 36, emphasizing the multiply occurring exposures and reducing noise.

7.4 Flash Exposure Series – Directed Lighting

Main Purpose: ???

...

7.5 Polarization Series – Saturation Enhancement

Main Purpose: Reflection suppression, saturation enhancement

In the current implementation of Enfuse, it is not possible in general to fuse a polarization series. Naïvely abusing ‘`--saturation-weight`’ will not work.

7.6 Focus Stacks – Depth-of-Field Increase

Main Purpose: Synthetic Depth-of-Field Increase

A *focus stack* is a series of images where the distance of the focal plane from the sensor varies. Sloppily speaking, the images were focussed at different distances. Fusing such a stack increases the depth-of-field (DOF) beyond the physical limits of diffraction.

7.6.1 Why create focus stacks?

Given

- a fixed sensor or film size,
- a lens’ particular focal length, and
- a notion about “sharpness”, technically speaking the size of the circle-of-confusion (CoC)

the photographer controls the depth-of-field with the aperture. Smaller apertures – this is larger aperture numbers – increase the DOF and vice versa. However, smaller apertures increase diffraction which in turn renders the image unsharp. So, there is an optimum aperture where the photographer gets maximum DOF. Sadly, for some purposes like macro shots it is not enough. One way out is to combine the sharp parts of images focused at different distances, thereby artificially increasing the total DOF. This is exactly what Enfuse can do.

All lenses have a so called “sweet spot” aperture, where their resolution is best. Taking pictures at this aperture, the photographer squeezes the maximum quality out of the lens. But: the “sweet spot” aperture often is only one or two stops away from wide open. Wouldn’t it be great to be able combine these best-possible images to form one high-quality, sufficient-DOF image? Welcome to Enfuse’s local-contrast selection abilities.

7.6.2 Preparing Focus Stacks

We are going to combine images with limited DOF to increase their in-focus parts. The whole process is about image sharpness. Therefore, the input images must align very well, not just well, but very well. For optimum results the maximum control point distance

in Hugin (see [Chapter 8 \[Helpful Programs\]](#), page 46) should not exceed 0.3–0.5 pixels to ensure perfect blending.

As in all image fusion operations it is preferable to use 16 bit linear (gamma = 1) images throughout, but 8 bit gamma encoded images will do. Naturally, high SNR input data always is welcome.

7.6.3 Local Contrast Based Fusing

A bare bones call to Enfuse for focus stacking could look like this.

```
enfuse \
  --exposure-weight=0 \
  --saturation-weight=0 \
  --contrast-weight=1 \
  --hard-mask \
  ... \
  --output=output.tif \
  input-<0000-9999>.tif
```

Here is what each option causes:

`--exposure-weight=0`

Switch **off** exposure based pixel selection. The default weight is 1.0.

`--saturation-weight=0`

Switch **off** saturation based pixel selection. The default weight is 0.2.

`--contrast-weight=1`

Switch **on** pixel selection based on local contrast.

`--hard-mask`

Select the best pixel from the image stack and ignore all others. Without this option, Enfuse uses all pixels in the stack and weights them according to their respective quality, which in our case is local contrast. Without `--hard-mask`, the result will always look a bit soft. See [Section 4.4 \[Local Contrast Weighting\]](#), page 24.

If you want to see some entertaining progress messages – local-contrast weighting takes a while –, also pass the `--verbose` option for a verbose progress report.

7.6.4 Basic Focus Stacking

For a large class of image stacks Enfuse’s default algorithm, as selected in [Section 7.6.3 \[Local Contrast Based Fusing\]](#), page 39, to determine the sharpness produces nice results. The algorithm uses a moving square window, the so-called contrast window. It computes the standard deviation of the pixels inside of the window. The program then selects the window’s center pixel of the image in the stack where the standard deviation is largest, that is, the local contrast reaches the maximum.

However, the algorithm fails to deliver good masks for images which exhibit high contrast edges on the scale of the contrast window size. The typical artifacts that show up are

- faint dark seams on the light side of the high contrast edges and
- extremely soft, slightly lighter seams on the dark side of the high contrast edges,

where the distance of the seams from the middle of the edge is comparable to the contrast window size.

If your results do not show any of these artifacts, stick with the basic algorithm. Advanced focus stacking, as described in the next sections, delivers superior results in case of artifacts, though requires manually tuning several parameters.

7.6.5 Advanced Focus Stacking

If your fused image shows any of the defects described in the previous section, you can try a more difficult-to-use algorithm that effectively works around the seam artifacts. It is described in the next section.

7.6.5.1 A Detailed Look at the Problem

Let us use an example to illustrate the problem of relating the sharpness with the local contrast variations. Say we use a 5×5 contrast window. Moreover, let `sharp_edge` and `smooth_edge` be two specific configurations:

```
sharp_edge = [ 0, 0, 200, 0, 0;
               0, 225, 0, 0, 0;
               0, 255, 0, 0, 0;
               215, 0, 0, 0, 0;
               200, 0, 0, 0, 0]
```

```
smooth_edge = [ 0, 62, 125, 187, 250;
                1, 63, 126, 188, 251;
                2, 65, 127, 190, 252;
                3, 66, 128, 191, 253;
                5, 67, 130, 192, 255]
```

where ‘;’ separates the rows and ‘,’ separates the columns. This is in fact **Octave** syntax.

Images **Figure 7.1** and **Figure 7.2** show plots of the matrices `sharp_edge` and `smooth_edge`.

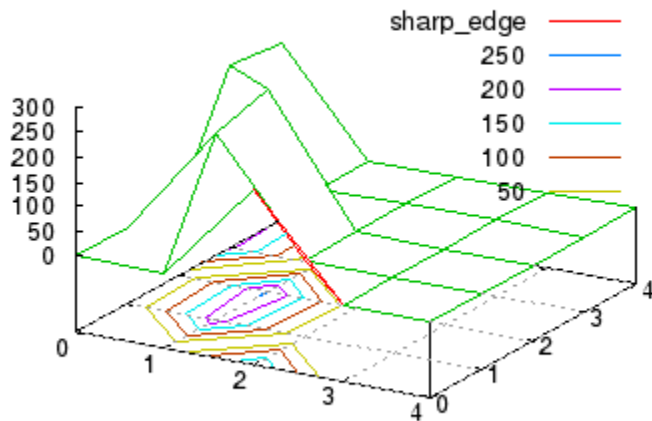


Figure 7.1: 3D plot augmented by contour plot of the matrix `sharp_edge`.

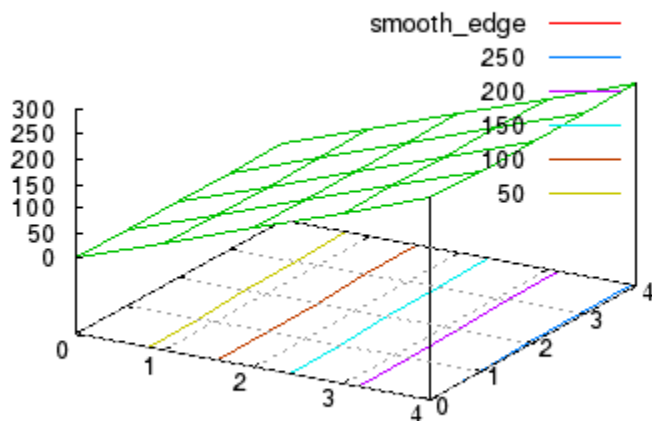


Figure 7.2: 3D plot augmented by contour plot of the matrix `smooth_edge`.

Our intuition lets us “see” an extremely sharp edge in the first matrix, whereas the second one describes an extraordinarily smooth diagonal intensity ramp. Which one will be selected? Well, `sharp_edge` has a standard deviation of 88.07 and `smooth_edge` has 88.41. Thus, `smooth_edge` wins, contradicting our intuition, and even worse, our intention!

Sadly, configurations like `smooth_edge` occur more often with high-quality, good *bokeh* lenses. In fact, they are the very manifestation of “good bokeh”. Therefore, Laplacian edge detection plays an important role when working with high-quality lenses.

7.6.5.2 Laplacian Edge Detection

Enfuse provides a Laplacian-based algorithm that can help in situations where weighting based on the standard deviation fails. It is activated with a positive value for *SCALE* in `--contrast-edge-scale=SCALE`. The Laplacian will detect two-dimensional *curvature* on the scale of *SCALE*. Here and in the following we simply speak of “curvature” where we mean “magnitude of curvature”. That is, we shall not distinguish between convex and concave edges. Enfuse always use the magnitude of curvature for weighting.

Typically, *SCALE* ranges between 0.1 pixels and 0.5 pixels, where 0.3 pixels is a good starting point. To find the best value for *SCALE* though, usually some experimentation will be necessary. Use `--save-masks` to get all soft-mask (default: `softmask-%n.tif`) and hard-mask files (default: `hardmask-%n.tif`). Check how different scales affect the artifacts. Also see [Chapter 5 \[Understanding Masks\]](#), page 31.

7.6.5.3 Local Contrast Enhancement

Sometimes Enfuse misses smoother edges with `--contrast-edge-scale` and a little local contrast enhancement (LCE) helps. Set `--contrast-edge-scale=SCALE:LCE-SCALE:LCE-FACTOR`, where *LCE-SCALE* and *LCE-FACTOR* work like the *unsharp mask* filters in various image manipulation programs. Start with *LCE-SCALE* ten times the value of *SCALE* and a *LCE-FACTOR* of 2–5.

LCE-SCALE can be specified as a percentage of *SCALE*. *LCE-FACTOR* also can be specified as a percentage. Examples:

```
--contrast-edge-scale=0.3:3.0:3
--contrast-edge-scale=0.3:1000%:3.0
--contrast-edge-scale=0.3:3:300%
--contrast-edge-scale=0.3:1000%:300%
```

By default LCE is turned off.

7.6.5.4 Suppressing Noise or Recognizing Faint Edges

The Laplacian-based algorithm is much better at resisting the seam problem than the local-contrast algorithm, but it has two shortcomings:

1. The Laplacian is very susceptible to noise and
2. it fails to recognize faint edges.

The `--contrast-min-curvature` option helps to mitigate both flaws.

The argument to `--contrast-min-curvature=CURVATURE` either is an absolute lightness value, for example 0.255 for 8 bit data and 0.65535 for 16 bit data, or, when given with a `'%'`-sign it is a relative lightness value ranging from 0% to 100%.

To suppress unreal edges or counter excessive noise, use the `--contrast-min-curvature` option with a *negative* curvature measure *CURVATURE*. This forces all curvatures less than $-CURVATURE$ to zero.

A *positive* curvature measure *CURVATURE* makes Enfuse merge the LoG data with the local-contrast data. Every curvature larger than or equal to *CURVATURE* is left unchanged, and every curvature less than *CURVATURE* gets replaced with the rescaled local-contrast data, such that the largest local contrast is just below *CURVATURE*. This combines the best parts of both techniques and ensures a precise edge detection over the whole range of edge curvatures.

Summary

`--contrast-edge-scale=0.3`

Use LoG to detect edges on a scale of 0.3 pixels. Apply the default grayscale projector: **average**.

`--contrast-edge-scale=0.3 --gray-projector=1-star`

Use LoG to detect edges on a scale of 0.3 pixels. Apply the L*-grayscale projector.

`--contrast-edge-scale=0.3:3:300%`

Use LoG to detect edges on a scale of 0.3 pixels, pre-sharpen the input images by 300% on a scale of 3 pixels. Apply the default grayscale projector: **average**.

`--contrast-edge-scale=0.3 --contrast-min-curvature=-0.5%`

Use LoG to detect edges on a scale of 0.3 pixels. Apply the default grayscale projector: **average** and throw away all edges with a curvature of less than 0.5%.

`--contrast-edge-scale=0.3 --contrast-min-curvature=0.5% -`

`-contrast-window-size=7`

Use LoG to detect edges on a scale of 0.3 pixels. Apply the default grayscale projector: **average** and throw away all edges with a curvature of less than 0.5% and replace the LoG data between 0% and 0.5% with SDev data. Use a window of 7×7 pixel window to compute the SDev.

7.6.5.5 Focus Stacking Decision Tree

Figure [Figure 7.3](#) helps the user to arrive at a well-fused focus stack with as few steps as possible.

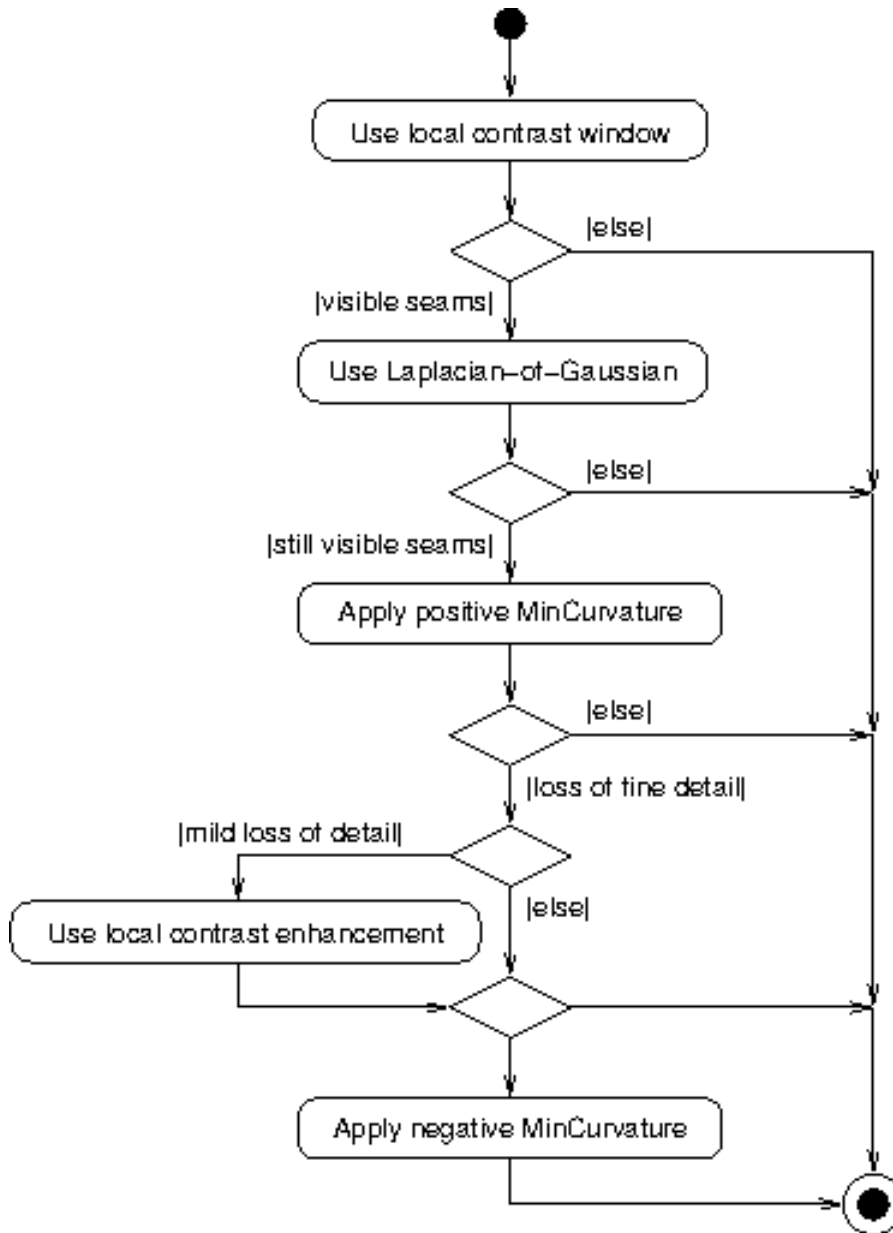


Figure 7.3: Focus stacking decision tree.

Always start with the default, contrast weighting with a local contrast window. Only if seams appear as described in [Section 7.6.5 \[Advanced Focus Stacking\]](#), [page 40](#) switch to Laplacian-of-Gaussian contrast detection.

If some seams remain even in LoG-mode, decrease the sensitivity of the edge detection with a positive ‘`--contrast-min-curvature`’. A too high value of ‘`--contrast-min-curvature`’ suppresses fine detail though. Part of the detail can be brought back with pre-sharpening, that is, [Section 7.6.5.3 \[Local Contrast Enhancement\]](#), [page 42](#) or combining LoG with local-contrast-window mode by using a negative ‘`--contrast-min-curvature`’.

Carefully examining the masks (option ‘`--save-masks`’) that Enfuse uses helps to judge the effects of the parameters.

7.6.6 Tips For Focus Stacking Experts

We have collected some advice with which even focus-stacking adepts can benefit.

- Ensure that the sensor is clean.

Aligning focus stacks requires varying the viewing angle, which corresponds to a changing focal length. Hence, the same pixel on the sensor gets mapped onto different positions in the final image. Dirt spots will occur not only once but as many times as there are images in the stack – something that is no fun to correct in postprocessing.

Along the same lines, the photographer may want to consider to prepare dark frames before, and possibly also after, the shoot of the focus stack, to subtract hot pixels before fusion.

- Prefer a low-sensitivity setting (“ISO”) on the camera to get low-noise images.
Fusing with ‘`--hard-mask`’ does not average, and thus does not suppress any noise in the input images.
- If the transition of in-focus to out-of-focus areas is too abrupt, record the images with closest and farthest focusing distances twice: first with the intended working aperture, and a second time with a small aperture (large aperture number).

The small aperture will give the fused image a more natural in-focus to out-of-focus transition and the working-aperture shots supply the detail in the in-focus regions.

8 Helpful Additional Programs

Several programs and libraries have proven helpful when working with Enfuse and Enblend.

Raw Image Conversion

- **DCRaw** is a universal raw-converter written by DAVID COFFIN.
- **UFRaw**, a raw converter written by UDI FUCHS and based on DCRaw, adds a GUI (**ufraw**), versatile batch processing (**ufraw-batch**), and some additional features such as cropping, noise reduction with wavelets, and automatic lens error correction.

Image Alignment and Rendering

- **ALE**, DAVID HILVERT'S anti-lamenessing engine for the real die-hard command-line users aligns, filters, and renders images.
- **Hugin** is a GUI that aligns and stitches images.
It comes with several command line tools, like **nona** to stitch panorama images, **align_image_stack** to align overlapping images for HDR or create focus stacks, and **fulla** to correct lens errors.
- **PanoTools** the successor of HELMUT DERSCH'S **original PanoTools** offers a set of command-line driven applications to create panoramas. Most notable are **PTOptimizer** and **PTmender**.

Image Manipulation

- **CinePaint** is a branch of an early Gimp forked off at version 1.0.4. It sports much less features than the current Gimp, but offers 8 bit, 16 bit and 32 bit color channels, HDR (for example floating-point TIFF, and OpenEXR), and a tightly integrated color management system.
- The **Gimp** is a general purpose image manipulation program. At the time of this writing it is still limited to images with only 8 bits per channel.
- **ImageMagick** and its clone **GraphicsMagick** are general purpose command-line driven image manipulation programs, for example, **convert**, **display**, **identify**, and **montage**.

High Dynamic Range

- **OpenEXR** offers libraries and some programs to work with the EXR HDR format.
- **PFSTools** create, modify, and tonemap high-dynamic range images.

Libraries

- **LibJPEG** is a library for handling the JPEG (JFIF) image format.
- **LibPNG** is a library that handles the Portable Network Graphics (PNG) image format.
- **LibTIFF** offers a library and utility programs to manipulate the ubiquitous Tagged Image File Format, TIFF.
The nifty **tiffinfo** command quickly inquires the properties of TIFF files.

Meta-Data Handling

- **EXIFTool** reads and writes EXIF meta data. In particular it copies meta data from one image to another.

- **LittleCMS** is the color management library used by Hugin, DCRaw, UFRaw, Enblend, and Enfuse. It supplies some binaries, too. **tifficc**, an ICC color profile applier, is of particular interest.

Appendix A Bug Reports

Most of this appendix was taken from the [Octave](#) documentation.

Bug reports play an important role in making Enblend and Enfuse reliable and enjoyable.

When you encounter a problem, the first thing to do is to see if it is already known. On the package's SourceForge [homepage](#) click "Develop" and on the development page click "Tracker". Search the trackers for your particular problem. If it is not known, then you should report the problem.

In order for a bug report to serve its purpose, you must include the information that makes it possible to fix the bug.

A.1 Have You Really Found a Bug?

If you are not sure whether you have found a bug, here are some guidelines:

- If Enblend or Enfuse get a fatal signal, for any options or input images, that is a bug.
- If Enblend or Enfuse produce incorrect results, for any input whatever, that is a bug.
- If Enblend or Enfuse produce an error message for valid input, that is a bug.
- If Enblend or Enfuse do not produce an error message for invalid input, that is a bug.

A.2 How to Report Bugs

The fundamental principle of reporting bugs usefully is this: report all the facts. If you are not sure whether to state a fact or leave it out, state it. Often people omit facts because they think they know what causes the problem and they conclude that some details do not matter. Play it safe and give a specific, complete example.

Keep in mind that the purpose of a bug report is to enable someone to fix the bug if it is not known. Always write your bug reports on the assumption that the bug is not known.

Try to make your bug report self-contained. If we have to ask you for more information, it is best if you include all the previous information in your response, as well as the information that was missing.

To enable someone to investigate the bug, you should include all these things:

- The exact version and configuration of Enblend or Enfuse. You can get this by running it with the options `'--version'` and `'--verbose'`.
- A complete set of input images that will reproduce the bug. Strive for a minimal set of *small*¹ images.
- The type of machine you are using, and the operating system name and its version number.
- A complete list of any modifications you have made to the source. Be precise about these changes. Show a `diff` for them.
- Details of any other deviations from the standard procedure for installing Enblend and Enfuse.

¹ Images of a size less than 1500×1000 pixels qualify as small.

- The *exact command line* you use to call Enblend or Enfuse, which then triggers the bug.

Examples:

```
~/local/bin/enblend -v \
  --fine-mask \
  --optimizer-weights=3:2 --mask-vectorize=12.5% \
  image-1.png image-2.png
```

or:

```
/local/bin/enfuse \
  --verbose \
  --exposure-weight=0 --saturation-weight=0 --entropy-weight=1 \
  --gray-projector=1-star \
  --entropy-cutoff=1.667% \
  layer-01.ppm layer-02.ppm layer-03.ppm
```

If you call Enblend or Enfuse from within a GUI like, for example, [Hugin](#) or [KImageFuser](#) by HARRY VAN DER WOLF, copy&paste or write down the command line that launches Enblend or Enfuse.

- A description of what behavior you observe that you believe is incorrect. For example, “The application gets a fatal signal,” or, “The output image contains black holes.”

Of course, if the bug is that the application gets a fatal signal, then one cannot miss it. But if the bug is incorrect output, we might not notice unless it is glaringly wrong.

A.3 Sending Patches for Enblend or Enfuse

If you would like to write bug fixes or improvements for Enblend or Enfuse, that is very helpful. When you send your changes, please follow these guidelines to avoid causing extra work for us in studying the patches. If you do not follow these guidelines, your information might still be useful, but using it will take extra work.

- Send an explanation with your changes of what problem they fix or what improvement they bring about. For a bug fix, just include a copy of the bug report, and explain why the change fixes the bug.
- Always include a proper bug report for the problem you think you have fixed. We need to convince ourselves that the change is right before installing it. Even if it is right, we might have trouble judging it if we do not have a way to reproduce the problem.
- Include all the comments that are appropriate to help people reading the source in the future understand why this change was needed.
- Do not mix together changes made for different reasons. Send them individually.

If you make two changes for separate reasons, then we might not want to install them both. We might want to install just one.

- Use the version control system to make your diffs. Prefer the [unified diff](#) format: `hg diff --unified 4`.
- You can increase the probability that your patch gets applied by basing it on a recent revision of the sources.

Appendix B Authors

ANDREW MIHAL (acmihal@users.sourceforge.net) has written Enblend and Enfuse.

Contributors

- PABLO D'ANGELO (dangelo@users.sourceforge.net) added the contrast criteria.
- JOE BEDA: Win32 porting up to version 3.2.
- KORNEL BENKO, kornelbenko@users.sourceforge.net: CMake support for version 4.0.
- ROGER GOODMAN: Proofreading of the manuals.
- MAX LYONS.
- MARK aka mjz: Win32 porting up to version 3.2.
- THOMAS MODES, tmodes@users.sourceforge.net: Win32 porting of version 4.0.
- RYAN SLEEVI, ryansleeви@users.sourceforge.net: Win32 porting of version 4.0.
- CHRISTOPH SPIEL (cspiel@users.sourceforge.net) added the gray projectors, the LoG-based edge detection, an O(n)-algorithm for the calculation of local contrast, entropy weighting, and various other features.
- BRENT TOWNSHEND, btownshend@users.sourceforge.net: HDR support.

Thanks to SIMON ANDRIOT and PABLO JOUBERT for suggesting the MERTENS-KAUTZ-VAN REETH technique and the name “Enfuse”.

Appendix C GNU Free Documentation License

Version 1.2, November 2002

Copyright © 2000, 2001, 2002 Free Software Foundation, Inc.
51 Franklin St, Fifth Floor, Boston, MA 02110-1301, USA

Everyone is permitted to copy and distribute verbatim copies of this license document, but changing it is not allowed.

0. PREAMBLE

The purpose of this License is to make a manual, textbook, or other functional and useful document *free* in the sense of freedom: to assure everyone the effective freedom to copy and redistribute it, with or without modifying it, either commercially or non-commercially. Secondly, this License preserves for the author and publisher a way to get credit for their work, while not being considered responsible for modifications made by others.

This License is a kind of “copyleft”, which means that derivative works of the document must themselves be free in the same sense. It complements the GNU General Public License, which is a copyleft license designed for free software.

We have designed this License in order to use it for manuals for free software, because free software needs free documentation: a free program should come with manuals providing the same freedoms that the software does. But this License is not limited to software manuals; it can be used for any textual work, regardless of subject matter or whether it is published as a printed book. We recommend this License principally for works whose purpose is instruction or reference.

1. APPLICABILITY AND DEFINITIONS

This License applies to any manual or other work, in any medium, that contains a notice placed by the copyright holder saying it can be distributed under the terms of this License. Such a notice grants a world-wide, royalty-free license, unlimited in duration, to use that work under the conditions stated herein. The “Document”, below, refers to any such manual or work. Any member of the public is a licensee, and is addressed as “you”. You accept the license if you copy, modify or distribute the work in a way requiring permission under copyright law.

A “Modified Version” of the Document means any work containing the Document or a portion of it, either copied verbatim, or with modifications and/or translated into another language.

A “Secondary Section” is a named appendix or a front-matter section of the Document that deals exclusively with the relationship of the publishers or authors of the Document to the Document’s overall subject (or to related matters) and contains nothing that could fall directly within that overall subject. (Thus, if the Document is in part a textbook of mathematics, a Secondary Section may not explain any mathematics.) The relationship could be a matter of historical connection with the subject or with related matters, or of legal, commercial, philosophical, ethical or political position regarding them.

The “Invariant Sections” are certain Secondary Sections whose titles are designated, as being those of Invariant Sections, in the notice that says that the Document is released

under this License. If a section does not fit the above definition of Secondary then it is not allowed to be designated as Invariant. The Document may contain zero Invariant Sections. If the Document does not identify any Invariant Sections then there are none.

The “Cover Texts” are certain short passages of text that are listed, as Front-Cover Texts or Back-Cover Texts, in the notice that says that the Document is released under this License. A Front-Cover Text may be at most 5 words, and a Back-Cover Text may be at most 25 words.

A “Transparent” copy of the Document means a machine-readable copy, represented in a format whose specification is available to the general public, that is suitable for revising the document straightforwardly with generic text editors or (for images composed of pixels) generic paint programs or (for drawings) some widely available drawing editor, and that is suitable for input to text formatters or for automatic translation to a variety of formats suitable for input to text formatters. A copy made in an otherwise Transparent file format whose markup, or absence of markup, has been arranged to thwart or discourage subsequent modification by readers is not Transparent. An image format is not Transparent if used for any substantial amount of text. A copy that is not “Transparent” is called “Opaque”.

Examples of suitable formats for Transparent copies include plain ASCII without markup, Texinfo input format, LaTeX input format, SGML or XML using a publicly available DTD, and standard-conforming simple HTML, PostScript or PDF designed for human modification. Examples of transparent image formats include PNG, XCF and JPG. Opaque formats include proprietary formats that can be read and edited only by proprietary word processors, SGML or XML for which the DTD and/or processing tools are not generally available, and the machine-generated HTML, PostScript or PDF produced by some word processors for output purposes only.

The “Title Page” means, for a printed book, the title page itself, plus such following pages as are needed to hold, legibly, the material this License requires to appear in the title page. For works in formats which do not have any title page as such, “Title Page” means the text near the most prominent appearance of the work’s title, preceding the beginning of the body of the text.

A section “Entitled XYZ” means a named subunit of the Document whose title either is precisely XYZ or contains XYZ in parentheses following text that translates XYZ in another language. (Here XYZ stands for a specific section name mentioned below, such as “Acknowledgements”, “Dedications”, “Endorsements”, or “History”.) To “Preserve the Title” of such a section when you modify the Document means that it remains a section “Entitled XYZ” according to this definition.

The Document may include Warranty Disclaimers next to the notice which states that this License applies to the Document. These Warranty Disclaimers are considered to be included by reference in this License, but only as regards disclaiming warranties: any other implication that these Warranty Disclaimers may have is void and has no effect on the meaning of this License.

2. VERBATIM COPYING

You may copy and distribute the Document in any medium, either commercially or noncommercially, provided that this License, the copyright notices, and the license notice saying this License applies to the Document are reproduced in all copies, and

that you add no other conditions whatsoever to those of this License. You may not use technical measures to obstruct or control the reading or further copying of the copies you make or distribute. However, you may accept compensation in exchange for copies. If you distribute a large enough number of copies you must also follow the conditions in section 3.

You may also lend copies, under the same conditions stated above, and you may publicly display copies.

3. COPYING IN QUANTITY

If you publish printed copies (or copies in media that commonly have printed covers) of the Document, numbering more than 100, and the Document's license notice requires Cover Texts, you must enclose the copies in covers that carry, clearly and legibly, all these Cover Texts: Front-Cover Texts on the front cover, and Back-Cover Texts on the back cover. Both covers must also clearly and legibly identify you as the publisher of these copies. The front cover must present the full title with all words of the title equally prominent and visible. You may add other material on the covers in addition. Copying with changes limited to the covers, as long as they preserve the title of the Document and satisfy these conditions, can be treated as verbatim copying in other respects.

If the required texts for either cover are too voluminous to fit legibly, you should put the first ones listed (as many as fit reasonably) on the actual cover, and continue the rest onto adjacent pages.

If you publish or distribute Opaque copies of the Document numbering more than 100, you must either include a machine-readable Transparent copy along with each Opaque copy, or state in or with each Opaque copy a computer-network location from which the general network-using public has access to download using public-standard network protocols a complete Transparent copy of the Document, free of added material. If you use the latter option, you must take reasonably prudent steps, when you begin distribution of Opaque copies in quantity, to ensure that this Transparent copy will remain thus accessible at the stated location until at least one year after the last time you distribute an Opaque copy (directly or through your agents or retailers) of that edition to the public.

It is requested, but not required, that you contact the authors of the Document well before redistributing any large number of copies, to give them a chance to provide you with an updated version of the Document.

4. MODIFICATIONS

You may copy and distribute a Modified Version of the Document under the conditions of sections 2 and 3 above, provided that you release the Modified Version under precisely this License, with the Modified Version filling the role of the Document, thus licensing distribution and modification of the Modified Version to whoever possesses a copy of it. In addition, you must do these things in the Modified Version:

- A. Use in the Title Page (and on the covers, if any) a title distinct from that of the Document, and from those of previous versions (which should, if there were any, be listed in the History section of the Document). You may use the same title as a previous version if the original publisher of that version gives permission.

- B. List on the Title Page, as authors, one or more persons or entities responsible for authorship of the modifications in the Modified Version, together with at least five of the principal authors of the Document (all of its principal authors, if it has fewer than five), unless they release you from this requirement.
- C. State on the Title page the name of the publisher of the Modified Version, as the publisher.
- D. Preserve all the copyright notices of the Document.
- E. Add an appropriate copyright notice for your modifications adjacent to the other copyright notices.
- F. Include, immediately after the copyright notices, a license notice giving the public permission to use the Modified Version under the terms of this License, in the form shown in the Addendum below.
- G. Preserve in that license notice the full lists of Invariant Sections and required Cover Texts given in the Document's license notice.
- H. Include an unaltered copy of this License.
- I. Preserve the section Entitled "History", Preserve its Title, and add to it an item stating at least the title, year, new authors, and publisher of the Modified Version as given on the Title Page. If there is no section Entitled "History" in the Document, create one stating the title, year, authors, and publisher of the Document as given on its Title Page, then add an item describing the Modified Version as stated in the previous sentence.
- J. Preserve the network location, if any, given in the Document for public access to a Transparent copy of the Document, and likewise the network locations given in the Document for previous versions it was based on. These may be placed in the "History" section. You may omit a network location for a work that was published at least four years before the Document itself, or if the original publisher of the version it refers to gives permission.
- K. For any section Entitled "Acknowledgements" or "Dedications", Preserve the Title of the section, and preserve in the section all the substance and tone of each of the contributor acknowledgements and/or dedications given therein.
- L. Preserve all the Invariant Sections of the Document, unaltered in their text and in their titles. Section numbers or the equivalent are not considered part of the section titles.
- M. Delete any section Entitled "Endorsements". Such a section may not be included in the Modified Version.
- N. Do not retitle any existing section to be Entitled "Endorsements" or to conflict in title with any Invariant Section.
- O. Preserve any Warranty Disclaimers.

If the Modified Version includes new front-matter sections or appendices that qualify as Secondary Sections and contain no material copied from the Document, you may at your option designate some or all of these sections as invariant. To do this, add their titles to the list of Invariant Sections in the Modified Version's license notice. These titles must be distinct from any other section titles.

You may add a section Entitled “Endorsements”, provided it contains nothing but endorsements of your Modified Version by various parties—for example, statements of peer review or that the text has been approved by an organization as the authoritative definition of a standard.

You may add a passage of up to five words as a Front-Cover Text, and a passage of up to 25 words as a Back-Cover Text, to the end of the list of Cover Texts in the Modified Version. Only one passage of Front-Cover Text and one of Back-Cover Text may be added by (or through arrangements made by) any one entity. If the Document already includes a cover text for the same cover, previously added by you or by arrangement made by the same entity you are acting on behalf of, you may not add another; but you may replace the old one, on explicit permission from the previous publisher that added the old one.

The author(s) and publisher(s) of the Document do not by this License give permission to use their names for publicity for or to assert or imply endorsement of any Modified Version.

5. COMBINING DOCUMENTS

You may combine the Document with other documents released under this License, under the terms defined in section 4 above for modified versions, provided that you include in the combination all of the Invariant Sections of all of the original documents, unmodified, and list them all as Invariant Sections of your combined work in its license notice, and that you preserve all their Warranty Disclaimers.

The combined work need only contain one copy of this License, and multiple identical Invariant Sections may be replaced with a single copy. If there are multiple Invariant Sections with the same name but different contents, make the title of each such section unique by adding at the end of it, in parentheses, the name of the original author or publisher of that section if known, or else a unique number. Make the same adjustment to the section titles in the list of Invariant Sections in the license notice of the combined work.

In the combination, you must combine any sections Entitled “History” in the various original documents, forming one section Entitled “History”; likewise combine any sections Entitled “Acknowledgements”, and any sections Entitled “Dedications”. You must delete all sections Entitled “Endorsements.”

6. COLLECTIONS OF DOCUMENTS

You may make a collection consisting of the Document and other documents released under this License, and replace the individual copies of this License in the various documents with a single copy that is included in the collection, provided that you follow the rules of this License for verbatim copying of each of the documents in all other respects.

You may extract a single document from such a collection, and distribute it individually under this License, provided you insert a copy of this License into the extracted document, and follow this License in all other respects regarding verbatim copying of that document.

7. AGGREGATION WITH INDEPENDENT WORKS

A compilation of the Document or its derivatives with other separate and independent documents or works, in or on a volume of a storage or distribution medium, is called

an “aggregate” if the copyright resulting from the compilation is not used to limit the legal rights of the compilation’s users beyond what the individual works permit. When the Document is included in an aggregate, this License does not apply to the other works in the aggregate which are not themselves derivative works of the Document.

If the Cover Text requirement of section 3 is applicable to these copies of the Document, then if the Document is less than one half of the entire aggregate, the Document’s Cover Texts may be placed on covers that bracket the Document within the aggregate, or the electronic equivalent of covers if the Document is in electronic form. Otherwise they must appear on printed covers that bracket the whole aggregate.

8. TRANSLATION

Translation is considered a kind of modification, so you may distribute translations of the Document under the terms of section 4. Replacing Invariant Sections with translations requires special permission from their copyright holders, but you may include translations of some or all Invariant Sections in addition to the original versions of these Invariant Sections. You may include a translation of this License, and all the license notices in the Document, and any Warranty Disclaimers, provided that you also include the original English version of this License and the original versions of those notices and disclaimers. In case of a disagreement between the translation and the original version of this License or a notice or disclaimer, the original version will prevail.

If a section in the Document is Entitled “Acknowledgements”, “Dedications”, or “History”, the requirement (section 4) to Preserve its Title (section 1) will typically require changing the actual title.

9. TERMINATION

You may not copy, modify, sublicense, or distribute the Document except as expressly provided for under this License. Any other attempt to copy, modify, sublicense or distribute the Document is void, and will automatically terminate your rights under this License. However, parties who have received copies, or rights, from you under this License will not have their licenses terminated so long as such parties remain in full compliance.

10. FUTURE REVISIONS OF THIS LICENSE

The Free Software Foundation may publish new, revised versions of the GNU Free Documentation License from time to time. Such new versions will be similar in spirit to the present version, but may differ in detail to address new problems or concerns. See <http://www.gnu.org/copyleft/>.

Each version of the License is given a distinguishing version number. If the Document specifies that a particular numbered version of this License “or any later version” applies to it, you have the option of following the terms and conditions either of that specified version or of any later version that has been published (not as a draft) by the Free Software Foundation. If the Document does not specify a version number of this License, you may choose any version ever published (not as a draft) by the Free Software Foundation.

Program Index

A

`ale`..... 46
`align_image_stack` (Hugin) 46

C

`cinpaint`..... 13, 46
`convert` (ImageMagick)..... 46

D

`dcraw`..... 3, 46
`display` (ImageMagick)..... 46

E

`exiftool`..... 46
`exrdisplay` (OpenEXR)..... 46

F

`fulla` (Hugin)..... 46

G

`gimp`..... 3, 13, 46
`gm` (GraphicsMagick) 46

H

`hugin`..... 3, 13, 35, 46

I

`identify` (ImageMagick)..... 31, 46

M

`montage` (ImageMagick)..... 46

N

`nona` (Hugin) 13, 46

P

`PanoTools`..... 3
`pfshdr_calibrate` (PFScalibration)..... 46
`pfsin` (PFSTools) 46
`pfsout` (PFSTools) 46
`pfstmo_*` (PFStmo) 46
`pfsview` (PFSTools) 46
`PTmender` (PanoTools) 46
`PTOptimizer` (PanoTools)..... 46

T

`tifficc` (LittleCMS) 47
`tiffinfo` (libtiff) 31, 46

U

`ufraw`..... 3, 46
`ufraw-batch` 46

Syntactic-Comment Index

E

enblend-response-file..... 7
enfuse-response-file..... 7

F

filename-globbing..... 7

G

glob..... 7
globbing..... 7

R

response-file..... 7

Option Index

--compression	8	--save-masks	18
--contrast-edge-scale	14	--SaveMasks (deprecated)	18
--contrast-min-curvature	18	--soft-mask	18
--contrast-weight	13	--SoftMask (deprecated)	18
--contrast-window-size	14	--verbose	10
--ContrastWindowSize (deprecated)	14	--version	10
--depth	11	--wContrast (deprecated)	13
--EdgeScale (deprecated)	14	--wEntropy (deprecated)	13
--entropy-cutoff	15	--wExposureMu (deprecated)	13, 14
--entropy-weight	13	--wExposureSigma (deprecated)	14
--entropy-window-size	16	--wrap	10
--EntropyCutoff (deprecated)	15	--wSaturation (deprecated)	14
--EntropyWindowSize (deprecated)	16	-b	11, 33
--exposure-mu	14	-c	11
--exposure-sigma	14	-d	11
--exposure-weight	13	-f	13
--gray-projector	16	-g	13
--GrayProjector (deprecated)	16	-h	9
--hard-mask	17, 22, 45	-l	9
--HardMask (deprecated)	17	-m	13, 33
--help	9	-o	10
--levels	9	-v	10
--MinCurvature (deprecated)	18	-V	10
--output	10	-w	10
--saturation-weight	14		

General Index

#

‘#’ (response file comment) 6

@

‘@’ (response file prefix) 5

3

360° panoramas 10

A

‘a.tif’ 10

advanced focus stacking 40

advanced focus stacking, recognizing faint edges
..... 42

advanced focus stacking, suppressing noise 42

affine transformation 4

algorithms, globbing 7, 8

alpha channel 2, 4

alpha channel, associated 13

aperture, sweet spot 38

applications of enfuse 35

authors, list of 50

average, disabling 22

average, weighted 21

B

basic focus stacking 39

binary mask 31

bits per channel 11

blending exposures 37

bug reports 48

Burt-Adelson multiresolution spline 1

C

channel width 11

channel, alpha 2

CIECAM02 11

circle-of-confusion 38

color appearance model 11

color space, sRGB 11

compression 8

compression, deflate 8

compression, JPEG 8

compression, LZW 8

compression, packbits 9

contrast enhancement, local 42

contrast weighting using a blend of methods ... 28

contrast weighting using laplacian-of-gaussian.. 26

contrast weighting using standard deviation 24

conversion, L*a*b* 17

conversion, raw 4

D

dark frame 45

decision tree, focus stacking 44

default output filename 10

deflate compression 8

delimiters, option 20

depth-of-field 38

depth-of-focus increase 38

digital blending 37

disabling average 22

double precision float, IEEE754 12

dynamic range increase 36, 38

E

edge detection, laplacian 42

entropy 29

entropy, definition 28

estimators 26

expectation value 25

expert focus stacking tips 45

exposure series 36

exposure series, common misconceptions 37

exposure series, tips for beginners 37

F

filename template 18

filename, literal 5

flash exposure series 38

focus stacking decision tree 44

focus stacking, advanced 40

focus stacking, basic 39

focus stacks 38

focus stacks, fusing 39

focus stacks, preparation 38

focus stacks, why create them 38

format of response file 6

free documentation license (FDL) 51

fusing, local-contrast-based 39

G

general index 60

glob(7) 8

globbing algorithm ‘literal’ 7, 8

globbing algorithm ‘none’ 8

globbing algorithm ‘sh’ 8

globbing algorithm ‘shell’ 8

globbing algorithm ‘wildcard’ 7, 8
 globbing algorithms 7, 8
 GNU free documentation license 51
 grammar, response file 6
 grammar, syntactic comment 7
 gray projector 16
 gray projector, ‘average’ 17
 gray projector, ‘channel-mixer’ 17
 gray projector, ‘1-star’ 17
 gray projector, ‘lightness’ 17
 gray projector, ‘luminance’ 17
 gray projector, ‘value’ 17

H

half precision float, OpenEXR 12
 helpful programs 46
 hot pixels 45
 Hugin 49

I

ICC profile 11
 IEEE754 double precision float 12
 IEEE754 single precision float 12
 image cache 33
 image cache, block size 11
 image cache, cache size 13
 image cache, location 33
 image, multi-layer 2
 images, fusable 35
 index, general 60
 index, option 59
 index, program 57
 index, syntactic-comment 58
 input mask 31
 invocation 5

J

JPEG compression 8

K

KImageFuser 49

L

L*a*b* conversion 17
 laplacian edge detection 42
 Laplacian of Gaussian (LoG) 26
 lens distortion, correction of 4
 levels, pyramid 9
 LibJPEG 46
 LibPNG 46
 LibTiff 46
 light probe 37
 literal filename 5

local analysis window 24
 local contrast enhancement 42
 local contrast problem 40
 local-contrast-based fusing 39
 LZW compression 8

M

mask template character, ‘%’ 19
 mask template character, ‘b’ 19
 mask template character, ‘B’ 19
 mask template character, ‘d’ 19
 mask template character, ‘D’ 19
 mask template character, ‘e’ 19
 mask template character, ‘E’ 19
 mask template character, ‘f’ 19
 mask template character, ‘F’ 19
 mask template character, ‘i’ 19
 mask template character, ‘n’ 19
 mask template character, ‘p’ 19
 mask template character, ‘P’ 19
 mask template characters, table of 19
 mask, binary 31
 mask, filename template 18
 mask, input files 31
 mask, saving 18
 mask, weight 31, 32
 masks, understanding 31
 memory, tuning usage of 33
 Mertens-Kautz-Van Reeth exposure fusion 1
 mode of operation (SDev, LoG, ...) 28
 multi-directory TIFF 2
 multi-layer image 2

N

natural sharp-unsharp transition 45
 noise reduction 36

O

Octave 48
 OpenEXR, data format 12
 OpenEXR, half precision float 12
 option delimiters 20
 option index 59
 options, common 8
 options, expert 14
 options, extended 11
 options, fusion 13
 order, of processing 5
 output file compression 8
 output filename, default 10
 output image, set size of 13
 overview 1

P

packbits compression	9
parallax error	4
photometric alignment	4
pixels, hot	45
polarization series	38
probability function	25
problem reports	48
problem, local contrast	40
processing order	5
profile, ICC	11
program index	57
programs, helpful additional	46
pyramid levels	9

R

raw conversion	4
response file	5
response file, comment ('#')	6
response file, force recognition of	6
response file, format	6
response file, grammar	6
response file, syntactic comment	7

S

saturation enhancement	38
scaling of parameters	28
sensor, use of clean	45
series, exposure	36
series, flash exposure	38
series, polarization	38
series, simple	36
simple series	36
single precision float, IEEE754	12
SourceForge	2, 48
SourceForge, tracker	48
sRGB color space	11
standard deviation	26
statistical moments	25
subtraction of dark frame	45
sweet spot aperture	38
syntactic comment, grammar	7

syntactic comment, response file	7
syntactic-comment index	58

T

TIFF, multi-directory	2
tiffcopy	2
tiffsplit	2
tips, focus stacking experts	45
TMPDIR	33
tracker, SourceForge	48
transformation, affine	4
transition, natural sharp-unsharp	45

U

understanding masks	31
---------------------------	----

V

variance	25
----------------	----

W

weight mask	31, 32
weight, entropy	13
weight, exposure	13
weight, local contrast	13
weighted average	21
weighting functions	21
weighting, contrast using a blend of methods ...	28
weighting, contrast using laplacian-of-gaussian	26
weighting, contrast using standard deviation ...	24
weighting, exposure	1, 22
weighting, general concept of	21
weighting, local contrast	1, 24
weighting, local entropy	1, 28
weighting, saturation	1, 23
window, local-analysis	24
workflow	3
workflow with Enblend	3
workflow with Enfuse	3
wrap around	10